



Vol. 36, N° 2 (2014)



Tribology in Industry

Journal of the Serbian Tribology Society

www.tribology.fink.rs

EDITOR-IN-CHIEF: S. MITROVIĆ, Faculty of Engineering, University of Kragujevac, Serbia

FOUNDING EDITOR-IN-CHIEF: B. IVKOVIĆ, Faculty of Engineering, University of Kragujevac, Serbia

EDITORIAL BOARD:

M. BABIĆ, Faculty of Engineering, University of Kragujevac, Serbia
B. BHUSHAN, The Ohio State University, Columbus, USA
K.-D. BOUZAKIS, Aristotle University of Thessaloniki, Thessaloniki, Greece
M.D. BRYANT, The University of Texas at Austin, Austin, USA
M.A. CHOWDHURY, Dhaka University of Engineering & Technology, Gazipur, Bangladesh
L. DELEANU, University Dunarea de Jos of Galati, Machine Design and Graphics Department, Galati, Romania
M. KANDEVA, Technical University of Sofia, Sofia, Bulgaria
G. MANIVASAGAM, VIT University, Vellore, India
N. MANOLOV, Technical University of Sofia, Sofia, Bulgaria
M. MILOSAVLJEVIĆ, Vinča Institute of Nuclear Sciences, Belgrade, Serbia
N. MYSHKIN, Metal-Polymer Research Institute of National Academy of Sciences of Belarus, Gomel, Belarus
S. PYTKO, AGH University of Science and Technology, Krakow, Poland
A. RAC, Faculty of Mechanical Engineering, University of Belgrade, Serbia
S. SEKULIĆ, Faculty of Technical Sciences, University of Novi Sad, Serbia
A.I. SVIRIDENOK, The Research Center of Resources Saving Problems of the National Academy of Sciences of Belarus, Grodno, Belarus
A. TUDOR, University Politehnica of Bucharest, Bucharest, Romania
A. VENCL, Faculty of Mechanical Engineering, University of Belgrade, Serbia

TECHNICAL EDITOR: M. PANTIĆ, Faculty of Engineering, University of Kragujevac, Serbia

EDITORIAL ASSISTANT: D. DŽUNIĆ, Faculty of Engineering, University of Kragujevac, Serbia

ISSN: 0354-8996 (print version)
2217-7965 (electronic version)

Published by: Faculty of Engineering, University of Kragujevac
Sestre Janjić 6, 34000 Kragujevac, Serbia

Financially supported by: Ministry of Education, Science and Technological Development
Republic of Serbia
Nemanjina 22-26, 11000 Belgrade, Serbia

Published quarterly



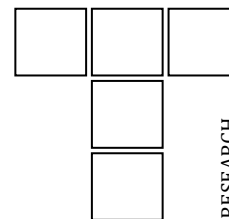
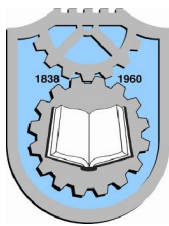
Tribology in Industry



Contents



RESEARCH	A. MUKHOPADHYAY: Some Tribological Characterization of "EPDM" Rubber	109
	J. LAKSHMIPATHY, B. KULENDRAN: Reciprocating Wear Behaviour of 7075Al/SiC and 6061Al/Al ₂ O ₃ Composites: A study of Effect of Reinforcement, Stroke and Load.	117
	S. BASKAR, G. SRIRAM: Tribological Behavior of Journal Bearing Material under Different Lubricants	127
	M.S. PRIYAN, P. HARIHARAN, A. AZAD, K.S. KUMAR: Microstructure and Wear Analysis of FeBCr Based Coating Deposited by HVOF Method	134
	U.A. ZIA, A.A. BAQAI, W. AKRAM: Effect of Surface Roughness and Temperature on EHL for Parallel Surfaces Subjected to High Acceleration	144
	J.O. AGUNSOYE, S.I. TALABI, S.A. BELLO, I.O. AWE: The Effects of Cocos Nucifera (Coconut Shell) on the Mechanical and Tribological Properties of Recycled Waste Aluminium Can Composites	155
	H.M. MOBARAK, M. CHOWDHURY: Tribological Performance of Hydrogenated Amorphous Carbon (a-C: H) DLC Coating when Lubricated with Biodegradable Vegetal Canola Oil	163
	O.I. ABDULLAH, J. SCHLATTMANN, A.M. AL-SHABIBI: Thermo-mechanical Analysis of the Dry Clutches under Different Boundary Conditions	172
	M. KANDEVA, D. KARASTOIANOV, B. IVANOVA, V. POJIDAEVA: Influence of Nano-Diamond Particles on the Tribological Characteristics of Nickel Chemical Coatings	181
	N. RADHIKA, A. VAISHNAVI, G.K. CHANDRAN: Optimisation of Dry Sliding Wear Process Parameters for Aluminium Hybrid Metal Matrix Composites	188
	K.K. ALANEME, B.O. FATILE, J.O. BORODE: Mechanical and Corrosion Behaviour of Zn-27Al Based Composites Reinforced with Groundnut Shell Ash and Silicon Carbide	195
	S. MITROVIĆ, M. BABIĆ, N. MILORADOVIĆ, I. BOBIĆ, B. STOJANOVIĆ, D. DŽUNIĆ, M. PANTIĆ: Wear Characteristics of Hybrid Composites Based on Zn27 Alloy Reinforced With Silicon Carbide and Graphite Particles	204
	P.C. MISHRA: Analysis of a Rough Elliptic Bore Journal Bearing using Expectancy Model of Roughness Characterization	211
	M.R. RAHIMIPOUR, A.A. TOFIGH, M.O. SHABANI, P. DAVAMI: The Enhancement of Wear Properties of Compo-Cast A356 Composites Reinforced with Al ₂ O ₃ Nano Particulates	220



Wear Characteristics of Hybrid Composites Based on ZA27 Alloy Reinforced With Silicon Carbide and Graphite Particles

S. Mitrović^a, M. Babić^a, N. Miloradović^a, I. Bobić^b, B. Stojanović^a, D. Džunić^a, M. Pantić^a

^a Faculty of Engineering, University of Kragujevac, Kragujevac, Serbia,

^b Institute of Nuclear Sciences "Vinča", University of Belgrade, Belgrade, Serbia.

Keywords:

ZA27 alloy
Hybrid composites
Wear characteristics

ABSTRACT

The paper presents the wear characteristics of a hybrid composite based on zinc-aluminium ZA27 alloy, reinforced with silicon-carbide and graphite particles. The tested sample contains 5 vol.% of SiC and 3 vol.% Gr particles. Compocasting technique has been used to prepare the samples. The experiments were performed on a "block-on-disc" tribometer under conditions of dry sliding. The wear volumes of the alloy and the composite were determined by varying the normal loads and sliding speeds. The paper contains the procedure for preparation of sample composites and microstructure of the composite material and the base ZA27 alloy. The wear surface of the composite material was examined using the scanning electronic microscope (SEM) and energy dispersive spectrometry (EDS). Conclusions were obtained based on the observed impact of the sliding speed, normal load and sliding distance on tribological behaviour of the observed composite.

Corresponding author:

S. Mitrović
Faculty of Engineering,
University of Kragujevac,
Kragujevac, Serbia.
E-mail: boban@kg.ac.rs

© 2014 Published by Faculty of Engineering

1. INTRODUCTION

The composite material represents the solid connection of the two or more constituents, which are joined into the unbreakable connection, for obtaining the better mechanical, tribological and other characteristics.

Metal matrix composites (MMCs) have attracted considerable attention recently because of their potential advantages over monolithic alloys [1-3].

Zinc-aluminium (ZA) alloys have emerged as important material for tribological applications,

especially suitable for high-load and low-speed applications. Commercially available ZA alloys are characterized by good tribomechanical properties, low weight, excellent foundry castability and fluidity, good machining properties, low initial cost, and environmentally friendly technology. The zinc alloy with increased content of aluminium is one of the alloys, which can be used for manufacturing the metal matrix composites. The ZA27 alloy is considered as the most prospective for obtaining the composites, since it is convenient as a substrate for several methods of composites manufacturing. Besides, it is also convenient for

the heat treatment and plastic forming, thus it is possible to a posteriori influence the mechanical properties of the final products [4-7].

Various methods and techniques were used to substantially improve wear behaviour of Zn-Al (zinc-aluminium) alloys without lowering significantly the mechanical properties of materials [6-8].

Thanks to mentioned properties and good characteristics, zinc-aluminium alloys have inspired researchers to reinforce them with different dispersed reinforcement materials (SiC, Al₂O₃, graphite and garnet) in order to obtain much more enhanced mechanical and tribological properties [9-16].

Considering the above, ZA27/SiC/graphite composites may be a good alternative to zinc-aluminium alloys in many industrial applications.

2. EXPERIMENTAL PROCEDURE

2.1 Preparation of the composites

Hybrid ZA27/SiC/Graphite composites have been successfully prepared using the compocasting procedure.

Hybrid ZA27/SiC composite reinforced with graphite was produced at the Laboratory for materials of the Institute for nuclear sciences "Vinca". The obtained chemical structure of ZA27 alloy that was used during experimental investigations coincides with the corresponding chemical structure defined by standard. Average size of SiC particles was 26 µm, while average size of graphite particles was 15 µm.

The applied compocasting procedure consisted of two phases. During the first phase, infiltration of the particles from the secondary phases into the semisolid melt of the basic alloy was conducted with constant mechanical blending. Obtained composite casts were then subjected to hot pressing during the second phase. This was done in order to decrease porosity and get better connection between the matrix and the reinforcement particles. At the same time, better mechanical characteristic of the composite material were obtained.

2.2 Structure of the sample materials

Microstructure of ZA27 alloy and obtained composite were observed by metallurgy microscope and presented in Figs.1 and 2. Structure of the sample of ZA27 alloy is mainly dendrite (Fig. 1). Distinct uniformity of the structure was present, which indicates a favourable ratio of mechanical properties of the tested materials.

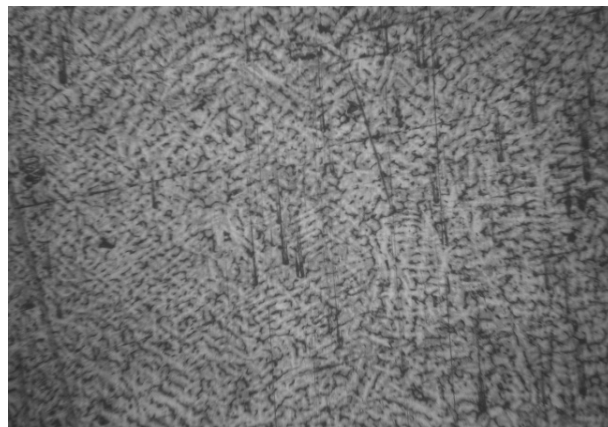


Fig. 1. Microstructure of ZA27 alloy.

Figure 2 shows the microstructure of the obtained composite.

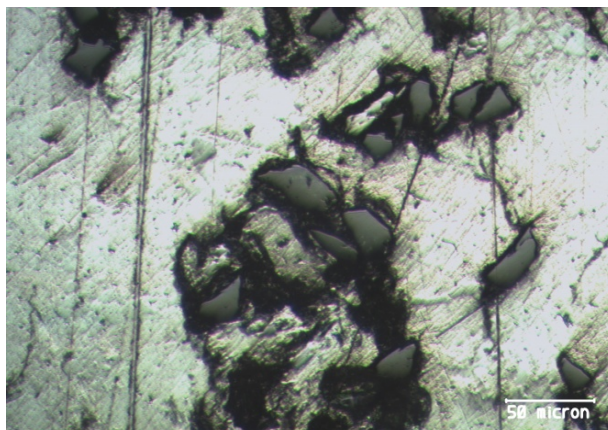


Fig. 2. Microstructure of ZA27/3% SiC/3% Gr composite (magnification x 400).

A uniform distribution of SiC and graphite particles was present in tested composite materials.

2.3 Testing methods

Experimental tests were performed at the Centre for tribology of the Faculty of Engineering, University of Kragujevac.

The tests of the ZA27/SiC/Gr composite's tribological characteristics were performed on the computer supported tribometer with "block-on-disc" contact geometry (Fig. 3). Tribometer provides variation of contact conditions in terms of shape, dimension and material of contact elements, normal contact load and sliding speed.

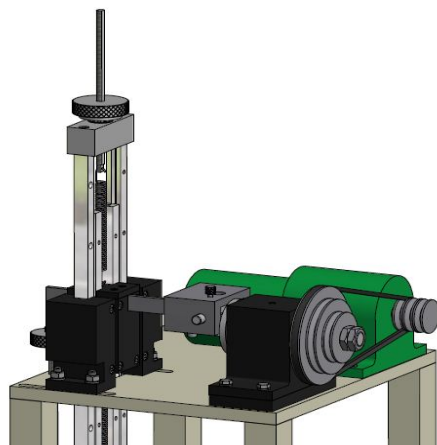


Fig. 3. The "block-on-disc" tribometer.

Based on the measured wear scar width on the contact surface obtained by variation of normal loads and sliding speeds, the material wear volume was calculated. The tests were performed in dry sliding conditions, with variation of sliding speed levels (0.25 m/s, 0.5 m/s and 1 m/s) and contact load levels (10 N, 20 N and 30 N). The observed sliding distances during tests were: 30 m, 60 m, 90 m, 150 m and 300 m.

The test contact pair meets the requirements of the ASTM G77-05 standard. It consists of the rotational disc with the diameter of $D_d=35$ mm and the width of $b_d=6.35$ mm and of the stationary block of the width of $b_b=6.35$ mm, the length of $l_b=15.75$ mm and the height of $h_b=10.16$ mm. The discs were made of 90MnV8 steel with hardness of 62 HRC and the surfaces roughness of $R_a=0.40$ μm . The blocks were made of the tested ZA27/5%SiC/3%Gr.

3. THE RESULTS AND DISCUSSION

The variations of dry sliding wear volume loss are presented in corresponding diagrams in the paper, depending on the sliding distance and for different values of sliding speeds and contact loads. The results of wear for given hybrid composite and for ZA27 alloy were presented in the same diagrams in order to understand the wear process evolution

during tests and to make corresponding comparisons. Solid lines on the diagrams refer to the wear scar widths of the composite, while the wear scar widths of the ZA27 alloy are denoted by dashed lines.

The variation of dry sliding wear volume loss with the sliding distance for different applied loads and for a sliding speed of 0.25 m/s is presented in Fig. 4. All diagrams are given for the sliding distance of 300 m.

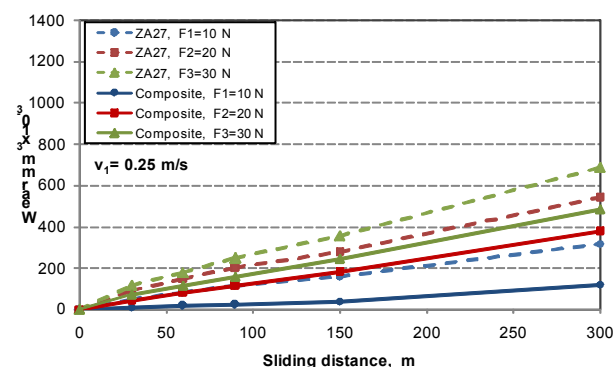


Fig. 4. Variation of wear volume of ZA27 alloy and ZA27/5%SiC/3%Gr composite against sliding distance for different contact loads and for sliding speed of $v=0.25$ m/s.

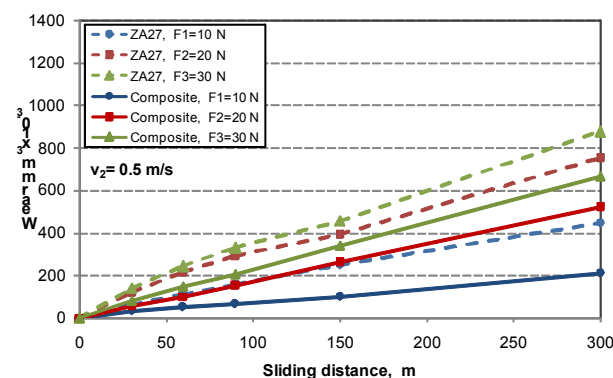


Fig. 5. Variation of wear volume of ZA27 alloy and ZA27/5%SiC/3%Gr composite against sliding distance for different contact loads and for sliding speed of $v=0.5$ m/s.

The variation of wear volume loss of ZA27 alloy and ZA27/5%SiC/3%Gr composite depending on the sliding distance and for different applied contact loads and the sliding speed of 0.5 m/s may be seen in Fig. 5.

Diagram in the Figure 6 presents the variation of wear volume loss of ZA27 alloy and ZA27/5%SiC/3%Gr composite depending on the sliding distance and for different applied contact loads and the sliding speed of 1 m/s.

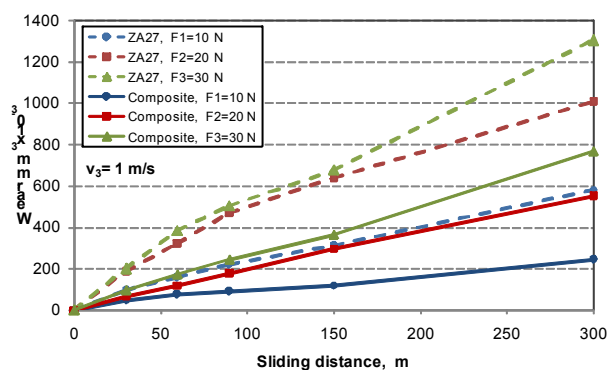


Fig. 6. Variation of wear volume of ZA27 alloy and ZA27/5%SiC/3%Gr composite against sliding distance for different contact loads and for sliding speed of $v = 1 \text{ m/s}$.

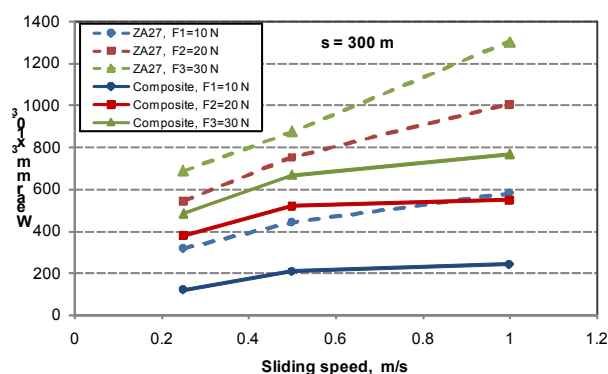


Fig. 7. Wear volume of ZA27/5%SiC/3%Gr composite and ZA27 alloy depending on sliding speeds, for different contact loads and for sliding distance of 300 m.

The wear volume losses of the alloy and the composite increase with the increase of the sliding distance. The wear volume loss curves are of the same character, both for alloy and for the observed composite material. The only difference may be seen in level of wear. At the beginning, a larger slope of the curves is noticeable, so there is the intensive initial wear of the composite material. A rapid increase of wear volume loss is characteristic for sliding distance of approximately 35 m. After reaching the zone of constant wear, the wear volume loss has slight, almost linear increase.

Generally, the wear behaviour of the tested materials is characterized by very intensive wear during initial period, after which there is a period of stabilization. Wear of the composites was always significantly lower when compared to wear of the matrix ZA27 alloy.

The influence of the sliding speed on wear volume for both materials is shown in Fig. 7, for different values of normal loads.

The effects of the normal load on wear volume of both composite and alloy is presented in Fig. 8, for different values of sliding speeds and for sliding distance of 300 m.

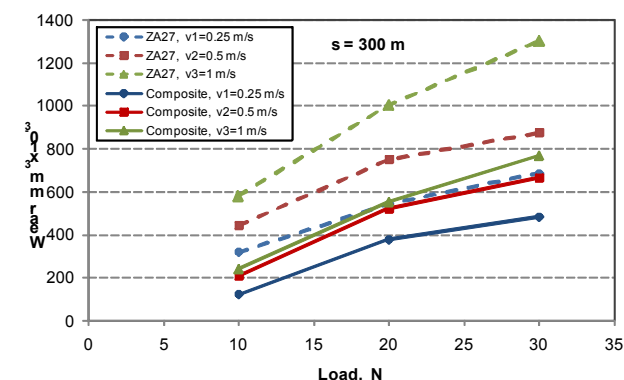


Fig. 8. Wear volume of ZA27/5%SiC/3%Gr composite and ZA27 alloy depending on contact loads, for different sliding speeds and for sliding distance of 300 m.

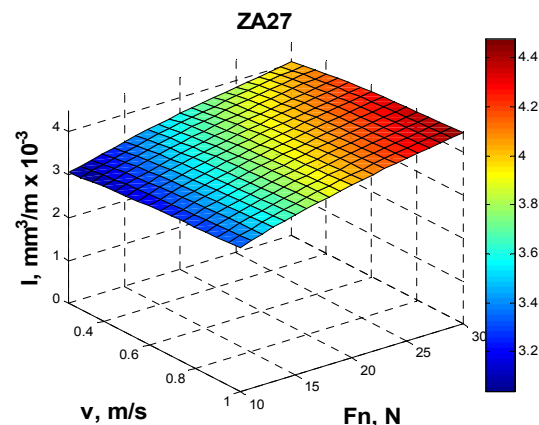


Fig. 9. Wear rate of ZA27 alloy in dry sliding conditions.

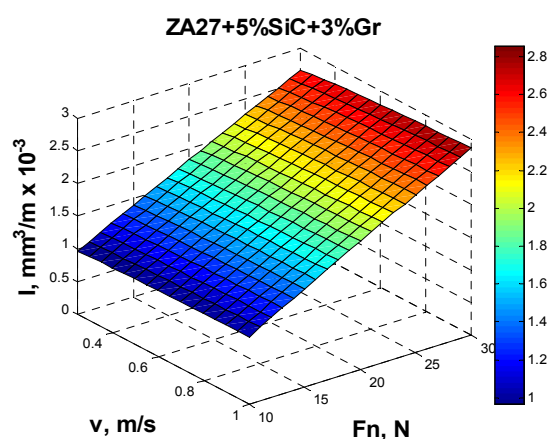


Fig. 10. Wear rate of ZA27/5%SiC/3%Gr composite in dry sliding conditions.

Analytical and graphical variations in wear rate due to changes of sliding speeds and normal loads in dry sliding conditions are presented in Figs. 9 and 10. Exponential regression functions

were adopted. Corresponding regression functions coefficients and curvilinear correlation indices were obtained showing the good correlation between experimental data and used empirical distributions.

Wear rate of ZA27 alloy in dry sliding conditions is presented in Fig. 9 and wear rate of ZA27/5%SiC/3%Gr composite in dry sliding conditions is shown in Fig. 10. Variations of the wear rate as a function of the sliding speed and normal load are graphically presented for the ZA27 alloy and composite materials.

Both tested materials share basically the same nature of wear process development in all contact conditions. The observed composite material has better wear resistance, under the same test conditions.

The comparative histograms of the wear volume formed after 300 m of sliding distance, depending on the contact conditions (the sliding speed and the normal force) for the basic ZA27 alloy and ZA27/5%SiC/3%Gr composite materials are shown in Fig. 11.

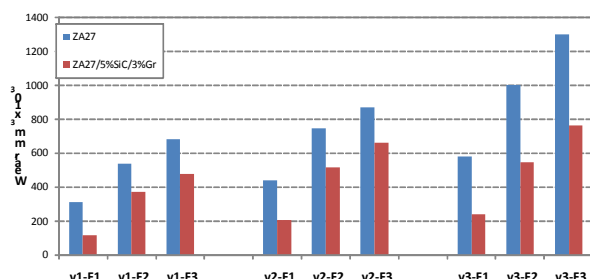


Fig. 11. Comparative histograms of wear volume of ZA27 alloy and ZA27/5%SiC/3%Gr composite.

Analysis of histograms in Fig. 11 shows that a trend of increase of wear with the increase of normal load may be observed. The increase of sliding speed induces also the increase of wear. This observation is valid for both tested materials. It may be noticed that the wear of the tested ZA27 alloy is always significantly higher compared to wear of the composite with addition of the SiC and graphite particles.

From the Fig. 11, the influence of the normal load and sliding speed on the wear magnitude may be clearly noticed. The wear rate increases both with the increase of the normal force the increase of the sliding speed. The largest value of wear

corresponds to the highest sliding speed ($v_3 = 1$ m/s) and to the highest value of the normal contact load ($F_3 = 30$ N). For the lowest sliding speed ($v_1 = 0.25$ m/s) and the lowest load ($F_1 = 10$ N), the smallest wear values were recorded.

Characterization of the microstructure of wear surface for metal matrix composites is more complex than that of the metals or alloys and an understanding of wear mechanisms is far from complete. The SEM analysis may contribute to better understanding of this mechanism.

The SEM micrograph of the worn surface at load of 10 N and at speed of 0.25 m/s for a sliding distance of 300 m is presented in Fig. 12 for the tested composite material.

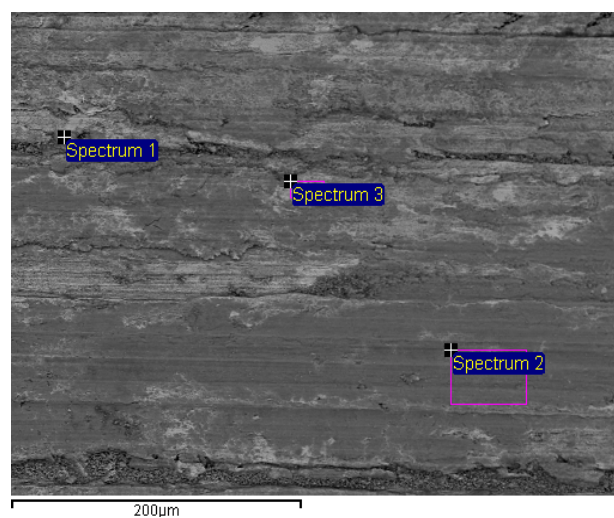


Fig. 12. SEM micrographs of worn surfaces of the ZA27/5%SiC/3%Gr composite.

Qualitative and quantitative chemical analyses of micro-constituents were performed using energy dispersive spectrometry (EDS), Fig. 13.

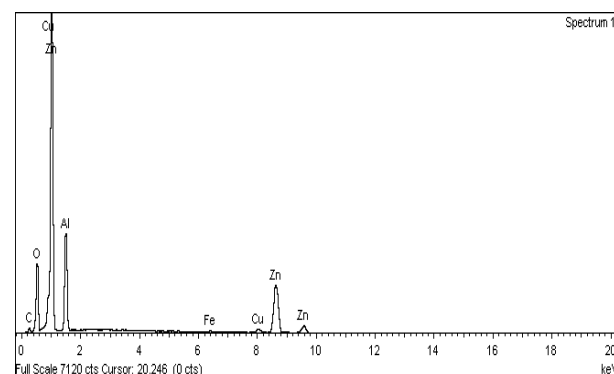


Fig. 13. EDS analysis of worn surface on the ZA27/10%SiC/1%Gr composite.

Analyses confirm the presence of constituent elements like: Zn, Al, SiC, Gr (C), as well as the presence of Fe as a consequence of material transfer from the counterpart to the composite block.

Microstructure of worn surface of ZA27 alloy is shown in Fig. 14.

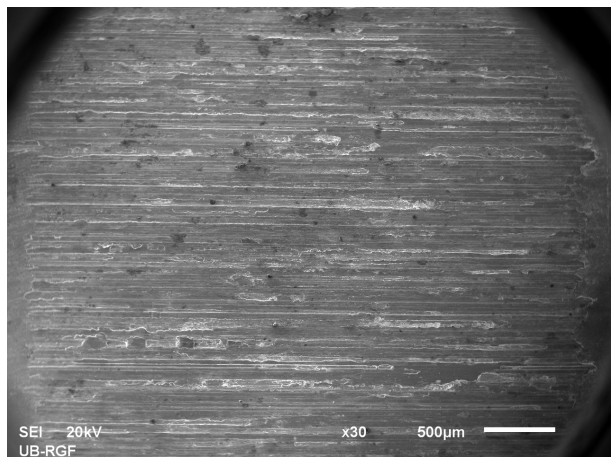


Fig. 14. Appearance of the worn surface of ZA27 alloy photographed by SEM in dry sliding conditions ($v_1 = 0.25$ m/s, $F_1 = 10$ N).

Microstructure of worn surface of ZA27/5%SiC/3%Gr composite is given in Fig. 15.

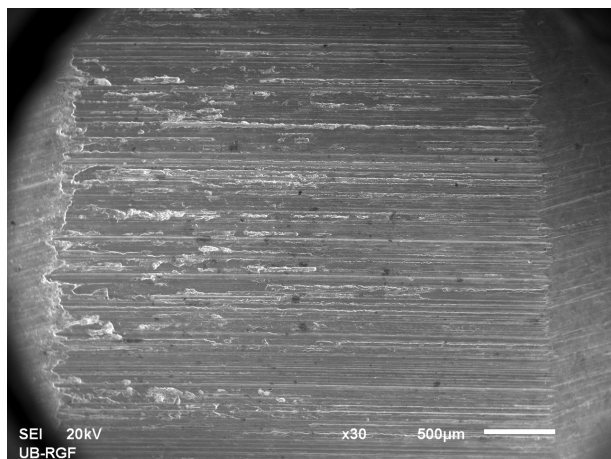


Fig. 15. Appearance of the worn surface of ZA27/5%SiC/3%Gr composite photographed by SEM in dry sliding conditions ($v_1 = 0.25$ m/s, $F_1 = 10$ N).

Generally, the parallel grooves and scratches can be seen over all the surfaces in the direction of sliding. These grooves and scratches resulted from the contact between the worn surface of the tested material and the counter disc of significantly higher hardness.

4. CONCLUSION

This research was conducted in order to complete the tribological knowledge on developed composite materials with ZA27 alloy reinforced by the SiC and graphite particles. The goal was to confirm the further possibilities for broader application of given composites as advanced tribo-materials, in different technical systems because they have excellent wear resistance when compared with the base ZA27 alloy.

By monitoring the wear process through observation of wear volume in dry sliding conditions, the following conclusions can be made:

- Wear of the tested composite is smaller than wear of ZA27 alloy for all applied sliding speeds and normal loads.
- Wear process evolution has the same character for both tested materials (basic ZA27 alloy and ZA27/10%SiC/1%Gr composite).
- Values of the wear volume of the observed composite material increase with the increase of normal loads.
- Wear volume also increases with the increase of the sliding speed.

Acknowledgments

This paper presents the research results obtained within the framework of the project TR-35021, financially supported by the Ministry of Education, Science and Technological Development of the Republic of Serbia.

REFERENCES

- [1] M. Babić, S. Mitrović: *Tribological characteristics of composites based on ZA alloy*, (in Serbian), Monograph, Faculty of Mechanical Engineering, Kragujevac, 2007.
- [2] M. Babić, S. Mitrović, I. Bobić, *Tribological Properties of Composites with Substrate Made of the ZA-27 Alloy Reinforced by the Graphite Particles*, Tribology in Industry, Vol. 29 No. 3&4, 2007.
- [3] S. Mitrović, M. Babić, B. Stojanović, N. Miloradović, M. Pantić, D. Džunić: *Tribological Potential of Hybrid Composites Based on Zinc and*

Aluminium Alloys Reinforced with SiC and Graphite Particles, Tribology in Industry, Vol. 34, No. 4, 177-185, 2012.

- [4] M. Babić, A. Vencl, S. Mitrović, I. Bobić: *Influence of T4 heat treatment on tribological behavior of ZA27 alloy under lubricated sliding condition*, Tribology Letters, Vol. 36, No. 2, pp. 125-134, 2009.
- [5] M. Babic, S. Mitrovic, B. Jeremic: *The Influence of Heat Treatment on the Sliding Wear Behaviour of a ZA-27 Alloy*, Tribology International, Vol. 43, No. 1-2, pp. 16-21, 2010.
- [6] M. Babic, S. Mitrovic, D. Džunic, B. Jeremic, I. Bobic: *Tribological Behaviour of Composites Based on Za-27 Alloy Reinforced With Graphite Particles*, Tribology Letters, Vol. 37, No. 2, pp. 401-410, 2010.
- [7] K.H.W. Seah, S.C. Sharma, B.M. Girish: *Mechanical properties of as-cast and heat-treated ZA-27/graphite particulate composites*, Composites Part A: Applied Science and Manufacturing, Vol. 28, No. 3, pp. 251-256, 1997.
- [8] S.C. Sharma, B.M. Girish, R. Kramath, B.M. Satish: *Graphite particles reinforced ZA-27 alloy composite materials for journal bearing applications*, Wear, Vol. 219, No. 2, pp. 162-168, 1998.
- [9] B.K. Prasad: *Abrasive wear characteristics of a zinc-based alloy and zinc-alloy/SiC composite*, Wear, Vol. 252, No. 3-4, pp. 250-263, 2002.
- [10] S.C. Sharma, B.M. Girish, R. Kramath, B.M. Satish: *Effect of SiC particle reinforcement on the unlubricated sliding wear behavior of ZA-27 alloy composites*, Wear, Vol. 213, pp. 33-40, 1997.
- [11] B.K. Prasad: *Investigation into sliding wear performance of zinc based alloy reinforced with SiC particles in dry and lubricated conditions*, Wear, Vol. 262, No. 3-4, pp. 262-273, 2007.
- [12] S. Mitrović, M. Babić, I. Bobić: *ZA-27 alloy composites reinforced with Al_2O_3 particles*, Tribology in Industry, Vol. 29, No. 3-4, pp. 35-41, 2007.
- [13] M. Babić, S. Mitrović, I. Bobić, F. Živić: *Wear behavior of composites based on ZA-27 alloy reinforced by Al_2O_3 particles under dry sliding condition*, Tribology Letters, Vol. 38, No. 3, pp. 337-346, 2010.
- [14] A Vencl: *MMCs based on hypoeutectic Al-Si alloy: Tribological properties in dry sliding conditions*, Tribological Journal BULTRIB, Vol. 2, No. 2, pp. 17-22, 2012.
- [15] N. Miloradović, B. Stojanović: *Tribological behavior of ZA-27/10SiC/1Gr Hybrid Composite*, Journal of the Balkan Tribological Association, Vol. 19, No. 1, pp. 97-105, 2013.
- [16] B. Stojanović, M. Babić, S. Mitrović, A. Vencl, N. Miloradović, M. Pantić: *Tribological characteristics of aluminum hybrid composites reinforced with silicon carbide and graphite*, Journal of the Balkan Tribological Association, Vol. 19, No. 1, pp. 83-96, 2013.