



ГОДИНА
ФАКУЛТЕТА ИНЖЕЊЕРСКИХ НАУКА У КРАГУЈЕВЦУ
1960-2020



Ministry of Education,
Science and Technological Development

8th International Congress
Motor Vehicles & Motors 2020
ECOLOGY -
VEHICLE AND ROAD SAFETY
- EFFICIENCY
Proceedings



University of Kragujevac



Faculty of Engineering



Department for motor vehicles
and motors



International Journal for Vehicle
Mechanics, Engines and
Transportation Systems

October 8th - 9th, 2020
Kragujevac, Serbia

**8th International Congress
Motor Vehicles & Motors 2020**

**ECOLOGY -
VEHICLE AND ROAD SAFETY
- EFFICIENCY**

BOOK OF PROCEEDINGS

October 8th - 9th, 2020
Kragujevac, Serbia

Publisher: Faculty of Engineering, University of Kragujevac
Sestre Janjić 6, 34000 Kragujevac, Serbia

For Publisher: Prof. Dobrica Milovanović, Ph.D.
Dean of the Faculty of Engineering

Editors: Prof. Božidar Krstić, Ph.D.
Assoc. prof. Danijela Miloradović, Ph.D.

Technical preparation: Asisst. Nadica Stojanović, M.Sc.
Assist. Ivan Grujić, M.Sc.

Cover: Nemanja Lazarević

CD printing: Faculty of Engineering, University of Kragujevac, Kragujevac

ISBN: 978-86-6335-074-8

Year of publication: 2020.

Number of copies printed: 200

CIP - Каталогизacija u publikaciji
Narodna biblioteka Srbije, Beograd

629.3(082)(0.034.2)
621.43(082)(0.034.2)

INTERNATIONAL Congress Motor Vehicles and Motors (8 ; 2020 ; Kragujevac)
Ecology - vehicle and road safety - efficiency [Elektronski izvor] : proceedings / 8th
International Congress Motor Vehicles & Motors 2020, October 8th - 9th, 2020
Kragujevac, Serbia ; [congress organizers University of Kragujevac [and] Faculty of
Engineering of the University of Kragujevac, Department for Motor Vehicles and Motors,
FE Kragujevac [and] International Journal "Mobility & Vehicle Mechanics"] ; [editors
Božidar Krstić, Danijela Miloradović]. - Kragujevac : Faculty of Engineering, University,
2020 (Kragujevac : Faculty of Engineering, University). - 1 elektronski optički disk (DVD) ;
12 cm

Sistemski zahtevi: Nisu navedeni. - Nasl. sa naslovne strane dokumenta. - Tiraž 200. -
Bibliografija uz svaki rad.

ISBN 978-86-6335-074-8

a) Моторна возила -- Зборници б) Мотори са унутрашњим сагоревањем -- Зборници
в) Електрична возила -- Зборници г) Хибридна електрична возила -- Зборници
COBISS.SR-ID 22017545

Copyright © 2020 Faculty of Engineering, University of Kragujevac

*Publishing of this CD Book of proceedings was supported by
Ministry of Education, Science and Technological Development of the Republic of Serbia*

SCIENTIFIC BOARD

President

Prof. Božidar Krstić, Ph.D., UniKg, FE, Serbia

Secretaries

Assist. Nadica Stojanović, M.Sc., UniKg, FE, Serbia

Assist. Ivan Grujić, M.Sc., UniKg, FE, Serbia

Assist. Slavica Mačužić Saveljić, M.Sc., UniKg, FE, Serbia

Members

Prof. Dragan Aleksendrić, Ph.D., UniBg, FME, Serbia

Assoc. Prof. Boris Antić, Ph.D., UniBg, FTTE, Serbia

Prof. Giovanni Belingardi, Ph.D., PoliTo, Italy

Prof. Ranko Božičković, Ph.D., UniSa, FTTE, RS, Bosnia and Herzegovina

Prof. Murat Ciniviz, Ph.D., SelUni, FT, Turkey

Prof. Adrian Clenci Ph.D., UniPit, Pitesti, Romania

Prof. Zoran Ćurguz, Ph.D., UniSa, FTTE, RS, Bosnia and Herzegovina

Assoc. Prof. Aleksandar Davinić, Ph.D., UniKg, FE, Serbia

Prof. Miroslav Demić, Ph.D., UniKg, FE, Serbia

Assoc. Prof. Jovan Dorić Ph.D., UniNS, FTS, Serbia

Prof. Mohamed Ali Emam, Ph.D., Helwan Uni, FE, Cairo, Egypt

Prof. Ivan Filipović, Ph.D., UniSa, FME, Bosnia and Herzegovina

Assoc. Prof. Jasna Glisović, Ph.D., UniKg, FE, Serbia

Prof. Valentina Golubović Bugarski, Ph.D., UniBL, FME, RS, Bosnia and Herzegovina

Prof. Emil Hnatko, Ph.D., Croatian Academy of Engineering, Zagreb

Prof. Rosen Hristov, Ph.D., TU Varna, Bulgaria

Prof. Aleksandra Janković, Ph.D., UniKg, FE, Serbia

Assist. Prof. Aleksandar Jovanović, Ph.D., UniKg, FE, Serbia

Prof. Srđan Jović, Ph.D., UniPr, FTS, Serbia

Prof. Hakan Kaleli, Ph.D., YTU, Istanbul, Turkey

Prof. Dimitrios Koulocheris, Ph.D., NTUA, Athens, Greece

Prof. Krsto Lipovac, Ph.D., UniBg, FTTE, Serbia

Prof. Zbigniew Lozia, Ph.D., WUT, Warsaw, Poland

Prof. Jovanka Lukić, Ph.D., UniKg, FE, Serbia

Prof. Zoran Lulić, Ph.D., UniZg, FME, Croatia

Assoc. Prof. Danijela Miloradović, Ph.D., UniKg, FE, Serbia

Assoc. Prof. Slavko Muždeka, Ph.D., UniDef, MA, Serbia

Assist. Prof. Boban Nikolić, Ph.D., UniNi, FME, Serbia

Prof. Alexander Novikov, Ph.D., OSUni, Orel, Russia

Prof. Patrizio Nuccio, Ph.D., PoliTo, Italy

Prof. Radivoje Pešić, Ph.D., UniKg, FE, Serbia

Assoc. Prof. Dalibor Pešić, Ph.D., UniBg, FTTE, Serbia

Prof. Snezana Petković, Ph.D., UniBL, FME, RS, Bosnia and Herzegovina

Prof. Boran Pikula, Ph.D., UniSa, FME, Bosnia and Herzegovina

Prof. Vladimir Popović, Ph.D., UniBg, FME, Serbia

Prof. Ralph Pütz, Ph.D., UniAS, Landshut, Germany

Prof. Dragoljub Radonjić, Ph.D., UniKg, FE, Serbia

Assoc. Prof. Dragan Ružić, Ph.D., UniNS, FTS, Serbia

Prof. Lazar Savin, Ph.D., UniNS, FA, Serbia

Prof. Mikhail Shatrov, Ph.D., MADI, Moscow, Russia

Prof. Hristo Stanchev, Ph.D., UniRu, FT, Ruse, Bulgaria

Prof. Dragoslava Stojiljković, Ph.D., UniBg, FME, Serbia

Assoc. Prof. Dragan Taranović, Ph.D., UniKg, FE, Serbia

Academician Dusan Teodorović, Ph.D., UniBg, FTTE, Serbia

Prof. Milan Tomić, Ph.D., UniNS, FA, Serbia

Prof. Miroljub Tomić, Ph.D., UniBg, FME, Serbia

Prof. Stevan Veinović, Ph.D., UniKg, FE, Serbia

ORGANIZATIONAL BOARD

President

Assoc. prof. Danijela Miloradović, Ph.D., UniKg, FE, Serbia

Secretaries

Assist. Nadica Stojanović, M.Sc., UniKg, FE, Serbia

Assist. Ivan Grujić, M.Sc., UniKg, FE, Serbia

Assist. Slavica Mačužić Saveljić, M.Sc., UniKg, FE, Serbia

CONGRESS ORGANIZERS

University of Kragujevac
Faculty of Engineering of the University of Kragujevac
Department for Motor Vehicles and Motors, FE Kragujevac
International Journal "Mobility & Vehicle Mechanics"

CONGRESS PATRONS

Ministry of Education, Science and Technological Development of the Republic of Serbia
City Council of Kragujevac

PREDGOVOR

8. međunarodni kongres „Motorna vozila i motori 2020“ organizovan je u neobičnim okolnostima. Dok je svetom vladala pandemija CORONA virusa, vredni autori iz zemlje i inostranstva pripremali su svoje radove u okviru motoa Kongresa „Ekologija–Vozilo i bezbednost saobraćaja-Efikasnost“. Imajući u vidu trenutnu situaciju, odziv autora je bio više nego zadovoljavajući. Za prezentaciju na Kongresu su prihvaćena ukupno 44 rada, koji su recenzirani i vezani sa jednom od postojećih glavnih tema Kongresa:

- Tehnologija sistema prenosa snage,
- Konstrukcija i proizvodnja vozila,
- Dinamika vozila i sistemi inteligentne kontrole,
- Interfejs vozač/vozilo, informacioni sistemi i sistemi za pomoć vozaču i
- Bezbednost drumskog saobraćaja.

Naši uvodničari, eminentni stručnjaci u oblasti motornih vozila i bezbednosti saobraćaja, pripremili su četiri uvodna predavanja koja predstavljaju savršen okvir za ostala istraživanja prezentirana na Kongresu. Akcenat uvodnih predavanja je bio na trendovima i perspektivama u bezbednosnom dizajnu vozila, dilemama u vezi postizanja nulte emisije vozila, kao i stanju bezbednosti drumskog saobraćaja i zakonske regulative vezane za vozila u Srbiji.

Tematske sekcije Kongresa potvrdile su multidisciplinarnost tehnologija vozila i važnost bezbednog okvira njegovog funkcionisanja. Prezentirani su radovi iz oblasti hibridnih vozila, alternativnih pogona, novih materijala i tehnologija u proizvodnji vozila, primene industrije 4.0, naprednih metoda smanjenja potrošnje energije i uticaja vibracija na putnike i raznih aspekata bezbednosti saobraćaja.

Uz tradicionalnu podršku Ministarstva nauke, prosvete i tehnološkog razvoja, Univerziteta u Kragujevcu, Fakulteta inženjerskih nauka i Međunarodnog časopisa „*Mobility and Vehicle Mechanics*“, organizatori Kongresa su odlučili da se, zbog preventivne zaštite zdravlja učesnika, Kongres po prvi put organizuje na Internet mreži (*online*). Organizovana je plenarna sekcija, kao i više radnih tematskih sekcija, na kojima su razmenjena dragocena iskustva stručnjaka iz oblasti automobilske industrije, istraživačkih instituta i akademskih institucija.

Nadamo se da će idući Kongres, čije je održavanje planirano za dve godine, da privuče još veći broj učesnika sa novim, aktuelnim temama primerenim brzom razvoju tehnologija motornih vozila.

Kragujevac,
8. oktobar 2020. godine

Naučni i Organizacioni odbor
Međunarodnog kongresa „Motorna vozila i motori 2020“

FOREWORD

The 8th International Congress "Motor Vehicles and Engines 2020" was organized in unusual circumstances. While the CORONA virus pandemic ruled the world, hardworking authors have been preparing their papers within the motto of the Congress "Ecology - Vehicle and Traffic Safety - Efficiency". Given the current situation, the response of the authors was more than satisfactory. A sum of 44 papers was accepted for presentation at the Congress. All papers were reviewed and linked to one of the existing main topics of the Congress:

- Power Train Technology,
- Vehicle Design and Manufacturing,
- Vehicle Dynamics and Intelligent Control Systems,
- Driver/Vehicle Interface, Information and Assistance Systems and
- Road Traffic Safety.

Our keynote speakers, eminent experts in the field of motor vehicles and traffic safety, have prepared four introductory lectures that provide the perfect framework for other research presented at the Congress. The emphasis of the introductory lectures was on trends and perspectives in vehicle safety design, dilemmas regarding achieving zero vehicle emissions, as well as the state of road traffic safety and legal regulations related to vehicles in Serbia.

The thematic sections of the Congress confirmed the multidisciplinary nature of vehicle technologies and the importance of a safe framework for its functioning. Papers in the field of hybrid vehicles, alternative drives, new materials and technologies in vehicle production, application of Industry 4.0, advanced methods for reducing energy consumption and the impact of vibration on passengers and various aspects of traffic safety were presented.

With the traditional support of the Ministry of Science, Education and Technological Development, University of Kragujevac, Faculty of Engineering and the International Journal "Mobility and Vehicle Mechanics", the organizers of the Congress decided to organize the Congress on the Internet network (online) for the first time. A plenary section was organized, as well as several working thematic sections, where valuable experiences of experts from the automotive industry, research institutes and academic institutions were exchanged.

We hope that the next Congress, which is planned to be held in two years, will attract an even larger number of participants with new, current topics appropriate to the rapid development of motor vehicle technologies.

CONTENT

INTRODUCTORY LECTURES

MVM2020-IL1	Giovanni Belingardi Dario Fiumarella Filippo Germanetti Alessandro Scattina	RECENT ADVANCE, TRENDS AND PERSPECTIVES IN THE SAFETY DESIGN OF VEHICLES	3
MVM2020-IL2	Boris Antić	ROAD TRAFFIC SAFETY: SERBIA 2020	15
MVM2020-IL3	Ralph Pütz	TOWARDS ZERO EMISSION: ARE E-FUELS A PROMISING OPTION?	23
MVM2020-IL4	Saša Mitić Ivan Blagojević Dragan Stamenković	VEHICLE LEGISLATION - SERBIA VS. EUROPE	33

SECTION A Power Train Technology

MVM2020_001	Giovanni Belingardi Nicola Amati Angelo Bonfitto	ELECTRIC AND HYBRID VEHICLES: ARE WE READY FOR THE NEW MOBILITY ERA?	43
MVM2020_009	Ivan Grujić Nadica Stojanović Jovan Dorić Aleksandar Davinić Saša Vasiljević	NUMERICAL ANALYSIS OF THE DUAL FUEL IC ENGINE WORKING CYCLE	55
MVM2020_010	Zoran Masoničić Dragan Vašalić Ivan Grujić Aleksandar Davinić Radivoje Pešić	SOME ASPECTS CONCERNING APPLICATION OF ALTERNATIVE FUELS AS REGARDS FLUID FLOW PATTERN AND FLAME PROPAGATION IN PARTICULAR COMBUSTION CHAMBER WITH STRONG MACRO FLOWS	61
MVM2020_011	Slobodan Mišanović Dragan Taranović Pavle Krstić Dušan Živić	MEASUREMENT OF RECOVERY ELECTRICITY ON THE E-BUS HIGER KLQ6125GEV3 ON EKO 1 LINE IN BELGRADE AND IMPACT ON ENERGY EFFICIENCY	67
MVM2020_024	Predrag Mrđa Nenad Miljić Slobodan Popović Marko Kitanović	STATIONARY TEST PLAN OPTIMISATION USING SLOW DYNAMIC SLOPE ENGINE SCREENING	77
MVM2020_025	Marko Kitanović Slobodan Popović Nenad Miljić Predrag Mrđa	A NEURAL NETWORK-BASED CONTROL ALGORITHM FOR A HYDRAULIC HYBRID POWERTRAIN SYSTEM	85
MVM2020_027	Natalija Aleksić Danijela Nikolić Vanja Šušteršić	REVIEW OF SOLAR ENERGY APPLICATION IN AUTOMOTIVE INDUSTRY	95
MVM2020_040	Luka Ponorac Aleksandar Grkić Slavko Muždeka	HYBRID POWER TRAINS FOR HIGH-SPEED TRACKED VEHICLES	105

SECTION B

Vehicle Design and Manufacturing

MVM2020_007	Saša Vasiljević Jasna Glišović Blaža Stojanović Nadica Stojanović Ivan Grujić	COMPOSITION OF BRAKE PADS AND INFLUENCE FACTORS AFFECTING THE WEAR INTENSITY OF THE BRAKE PADS ON VEHICLES	117
MVM2020_012	Alexander Novikov Alexey Rodichev	APPLICATION OF PLAIN BEARINGS WITH CONTROLLED WEAR ON AUTOMOTIVE VEHICLES	123
MVM2020_015	Mirko Blagojević Miloš Matejić Milan Vasić	COMPARATIVE OVERVIEW OF CALCULATION OF NORMAL FORCE ON CYCLOIDAL GEAR TOOTH	131
MVM2020_017	Onur Güler Sandra Gajević Slavica Miladinović Hamdullah Çuvalcı Blaža Stojanović	OPTIMIZATION OF ZINC-BASED HYBRID NANOCOMPOSITES USING TAGUCHI GREY RELATION ANALYSIS	139
MVM2020_019	Aleksandar Poznić Boris Stojić	A CONTRIBUTION TO THE DEVELOPMENT OF AUTOMOTIVE MAGNETORHEOLOGICAL BRAKE	149
MVM2020_028	Dragan Čukanović Aleksandar Radaković Gordana Bogdanović Danilo Dragović	STATIC ANALYSIS OF PLATE MADE OF FUNCTIONALLY GRADED MATERIAL AS MODERN COMPOSITE USED IN MOTOR VEHICLE INDUSTRY	157
MVM2020_036	Vladimir Dunić	SHAPE MEMORY ALLOYS IN AUTOMOTIVE INDUSTRY – OVERVIEW, APPLICATION, MODELING	165
MVM2020_037	Aleksandar Radaković Dragan Čukanović Dragan Milosavljević Gordana Bogdanović Sanel Husović	NEW SHAPE FUNCTION IN BUCKLING ANALYSIS OF COMPOSITE LAMINATES USED IN TRANSPORT VEHICLES	169
MVM2020_039	Sonja Kostić Zorica Đorđević Dragan Rajković Milan Đorđević	EXPERIMENTAL METHOD FOR CALCULATION OF RADIAL STIFFNESS FOR SINGLE-ROW BALL BEARING	175
MVM2020_044	Ivan Miletić Marko Miletić Saša Milojević Robert Ulewicz Ružica Nikolić	THE BUCKLING ANALYSIS OF A ELASTICALLY CLAMPED RECTANGULAR PLATE	183
MVM2020_051	Milan Blagojević Milan Bojović Saša Milojević Petar Marković Dragan Lazarević	MODIFICATION OF RACING CAR CYLINDER HEAD USING 3D DIGITIZATION AND REVERSE ENGINEERING	191
MVM2020_052	Miloš Lazarević Vladica Živković Bogdan Nedić	APPLICATION OF PROCESSING BY EXPLOSION IN THE AUTOMOTIVE INDUSTRY	197

SECTION C

Vehicle Dynamics and Intelligent Control Systems

MVM2020_004	Miroslav Demić Danijela Miloradović	CONTRIBUTION TO RESEARCH OF TIRE ROLLING RESISTANCE OF MOTOR VEHICLES	207
-------------	--	--	-----

MVM2020_005	Isak Karabegović Edina Karabegović Mehmed Mahmić Ermin Husak	THE APPLICATION OF INDUSTRY 4.0 IN PRODUCTION PROCESSES OF THE AUTOMOTIVE INDUSTRY	217
MVM2020_006	Nadica Stojanović Oday I. Abdullah Ivan Grujić Jasna Glišović Saša Vasiljević	STRESSES DISTRIBUTION IN FUNCTION OF CONSTANT ACTING PRESSURE AND GENERATED TEMPERATURE ON THE BRAKE DISC	223
MVM2020_016	Liubov Sladkova	WHEEL OF VEHICLE INCREASED SURVIVABILITY	231

SECTION D

Driver/Vehicle Interface, Information and Assistance Systems

MVM2020_026	Dragan Ružić	ADVANCED METHODS TO REDUCE ENERGY CONSUMPTION FOR FARM TRACTOR CAB AIR- CONDITIONING	239
MVM2020_030	Slavica Mačužić Saveljić Jovanka Lukić	EFFECTS RELATED TO RANDOM WHOLE-BODY VIBRATION AND POSTURE ON A PASSENGERS	247
MVM2020_032	Slavica Mačužić Saveljić Igor Saveljić Nenad Filipović	EFFECT OF VIBRATION ON SEMICIRCULAR CANAL DURING WHOLE BODY VIBRATION	253
MVM2020_038	Marian Florin Mitroi	RELIABILITY AND VIABILITY OF THE VEHICLES IN CONTEXT OF THE FUTURE TECHNOLOGY - IoT	259

SECTION E

Road Traffic Safety

MVM2020_003	Victor I. Popov Lev M. Monosov Igor V. Polischuk	ENVIRONMENTAL PROBLEMS AND THEIR SOLUTION DURING CONSTRUCTION AND OPERATION OF ST. PETERSBURG BARRIER FLOOD PROTECTION	269
MVM2020_008	Saša Vasiljević Jasna Glišović Nadica Stojanović Ivan Grujić Jens Wahlström	ON THE IMPACT OF AIRBORNE BRAKE WEAR EMISSIONS ON ENVIRONMENTAL SAFETY	275
MVM2020_018	Perić Sreten Bučko Mihael Nedić Bogdan Radovanović Radovan	CONDITION MONITORING THROUGH ENGINE OIL ANALYSIS TESTS	281
MVM2020_022	Angelina Pavlović Goran Bošković Nebojša Jovičić	SIMULATION OF ROAD TRAFFIC NOISE POLLUTION IN KRAGUJEVAC USING QGIS SOFTWARE	291
MVM2020_033	Snežana Petković Valentina Golubović Bugarski Željko Đurić Gordana Globočki Lakić	ANALYSIS OF ENERGY EFFICIENCY OF DIFFERENT MODALITIES OF TOURIST TRANSPORT	307
MVM2020_034	Valentina Golubović-Bugarski Snežana Petković Gordana Globočki-Lakić	THE EFFECT OF CORROSION ON A STRUCTURAL INTEGRITY AND VEHICLE SAFETY	317

MVM2020_041	Nenad Marković Dalibor Pešić Boris Antić Dušan Graovac	ANALYSIS OF THE INFLUENCE OF VEHICLE FACTORS ON THE ORIGIN AND WEIGHT OF THE CONSEQUENCES OF TRAFFIC ACCIDENTS USING DEPTH ANALYSIS - CASE STUDY FOR THE CITY OF BELGRADE	327
MVM2020_042	Dragan Vašalić Zoran Masoničić Saša Milojević Ivan Ivković Radivoje Pešić	SOME ASPECTS CONCERNING MANAGEMENT OF ROAD TRANSPORT OF DANGEROUS GOODS USING CONTEMPORARY INFORMATION SYSTEMS	337
MVM2020_043	Zoran Papić Andrijana Jović Nenad Saulić Milja Simeunović	THE IMPORTANCE OF LONGITUDINAL CG POSITION FOR THE CAR MOVEMENT IN THE POST-IMPACT PHASE	343
MVM2020_046	Branislav Đorđević Saša Mitić	THE POSSIBILITIES FOR IMPLEMENTATION OF EVENT DATA RECORDERS IN USED VEHICLES	351
MVM2020_048	Vojislav Krstić	POSSIBILITIES DETERMINATION OF THE OPTIMAL STRATEGY FOR PREVENTIVE MAINTENANCE OF THE MOTOR ENGINE USING THE MULTICRITERIA OPTIMIZATION	359
MVM2020_049	Vojislav Krstić Boris Antić Siniša Božićković	ANALYSIS OF TECHNICAL CORRECTNESS OF LIGHTING AND LIGHT-SIGNALING DEVICES OF VEHICLES	365
MVM2020_050	Vojislav Krstić	MODELING AND SIMULATION OF TRAFFIC FLOWS TO ENSURE THE SECURITY OF TRAFFIC	373



International Congress
Motor Vehicles & Motors 2020
Kragujevac, Serbia
October 8th - 9th, 2020



MVM2020-022

Angelina Pavlović¹
Goran Bošković²
Nebojša Jovičić³

SIMULATION OF ROAD TRAFFIC NOISE POLLUTION IN Kragujevac USING QGIS SOFTWARE

ABSTRACT: Noise is characterized as an environmental problem that represents an exceptional danger to human health. With increased urbanization and motorization, road traffic has been identified as the dominant source of noise in urban areas. The traffic noise originates from vehicle exhaust and braking systems, devices for giving sound signals, engine operation, or as a result of contact between the wheels and the road. In urban areas, the intensity of traffic noise depends on the speed of the vehicle, the flow of traffic, and the surface on which the vehicles are moving. This study aims to monitor traffic noise using the device Brüel & Kjær 2250 on the territory of the city of Kragujevac at specific locations along the roads and during peak hours. Based on the numerical modeling of traffic noise in the Quantum GIS software (abbr. QGIS), it is possible to identify impacts of noise pollution as well as deviations of real noise values from the permissible noise limits. Serbian law regulates that the highest noise level along city roads can be 65 dB (A). The final results obtained by this research can be used to assess the current state of environmental noise pollution, which can be taken into account in the future process of transport planning in the city of Kragujevac.

KEYWORDS: road traffic noise, noise pollution, monitoring, QGIS

INTRODUCTION

In recent years, there has been a significant increase in the world population. According to the latest available report of the United Nations (abbr. UN), the world population reached 7.7 billion in 2019 [1]. Population growth has led people to move from rural to urban centers, which has affected the development of urbanization. Today, 55.3% of the total world population lives in cities. Globally, over 80 percent of economic activity is concentrated in cities [2]. The expansion of cities and the increase in the number of inhabitants in them also caused an increase in the use of motorized transport, i.e., an increase in individual travel to achieve mobility of the population.

The urbanization and motorization phenomenon has significantly contributed to the excessive burden on the environment. This phenomenon leads to the emergence of numerous environmental problems that affect the all living beings' quality of life. Precisely, the quality of life of the world's population is disturbed because of dominant environmental problems. Aside from the air quality, as the most dominant environmental problem stands out the increased noise level in the environment.

Noise can be defined as any unwanted sound of different types and intensity occurring in the living and working environment. If the comparison of noise with other environmental pollutants is carried out, it can be concluded that it as a pollutant is particular because of its effect that can have temporary or permanent consequences for human

¹ Angelina Pavlović, PhD student and Junior researcher, University of Kragujevac, Faculty of Engineering, Sestre Janjić 6, 34000 Kragujevac, Serbia, angelina.pavlovic@uni.kg.ac.rs (*Corresponding author)

² Goran Bošković, PhD, assist. prof., University of Kragujevac, Faculty of Engineering, Sestre Janjić 6, 34000 Kragujevac, Serbia, goran.boskovic@kg.ac.rs

³ Nebojša Jovičić, PhD, full prof., University of Kragujevac, Faculty of Engineering, Sestre Janjić 6, 34000 Kragujevac, Serbia, njovicic@kg.ac.rs

health. Constant exposure to this environmental pollutant has implications on people's physical and mental health and can cause acute and chronic acoustic trauma. The pyramid of noise effects is shown in Figure 1.

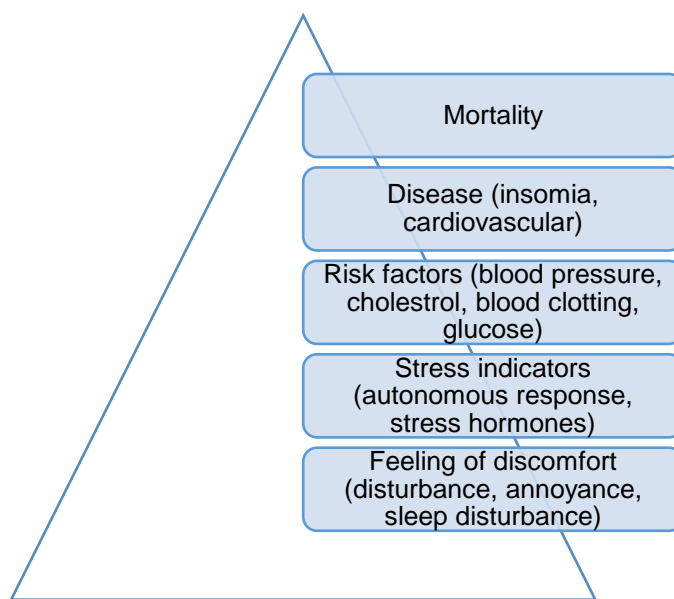


Figure 1 The pyramid of noise-induced health effects [3]

Noise can originate from a variety of outdoor and indoor sources. Traffic represents a significant source of noise in urban centers. Noise generated by traffic causes at least 10,000 cases of premature death, hypertension occurs in 910,000 inhabitants and closes by 43,000 hospital admissions per year in countries belonging to the European Union [4]. For this research, only the noise caused by road traffic is analyzed. Road traffic is the most dominant source of noise in cities. More than 40% of the European population is exposed to road traffic noise at levels exceeding the permissible noise limits [5]. The problem of traffic noise is made even more complicated by traffic conditions in the city, i.e., the fact that the number of vehicles on the streets is higher than the number for which the roads are designed.

Due to the above problems that noise creates, it is necessary to find the most optimal way to manage traffic noise. Road traffic noise management is becoming one of the most complex processes under the responsibility of urban planners and public health professionals. For that reason, one of the main aims of this paper is to estimate the population's exposure to a high noise level caused by road traffic among urban buildings in the city of Kragujevac at three specific locations (abbr. SL) is considered. That estimation can facilitate the prediction of traffic noise in the city of Kragujevac. Assessment of noise levels in this paper was performed using two methods: actual measurements of traffic noise using devices Brüel & Kjær 2250 and openNoise Mobile App and simulation of noise pollution using QGIS software and its special plugin opeNoise.

Simulation of road traffic noise pollution can display that its intensity varies in different locations of the city. The level of road traffic noise pollution depends on the noise source's location, the receiver, and the existing obstacles [6]. Noise mapping in this paper serves to understand how traffic noise pollution varies in space and how it can be reduced. The primary purpose of mapping noise traffic in QGIS software is to identify locations exposed to noise levels above the permitted limit values. According to mapping noise, it is possible to define activities that should be undertaken to reduce noise levels to protect public health (barriers, building design, sound insulation, land-use planning, personal protective equipment, etc.).

NOISE REGULATIONS

As already mentioned, noise is characterized as one of the primary environmental problems and pollutants in the environment. For that reason, it is necessary to manage noise following appropriate standards and legislation. It is generally known that the European Union is a world leader in defining legal directives, which refer to the protection of the population from the harmful effects of noise. In the 1980s, noise management activities as pollutants began in Europe. Noise management activities are performed following legal regulations and standards. One of the first documents, which is considered valid in the field of noise management, is the "Green Paper - Future Noise Policy," published by the European Commission in 1996. The "Green Paper" states that any future anti-noise strategy must be based on the fact that no person should be exposed to noise levels that can endanger its health and quality of life [7]. By publishing this document, opportunities have been created to improve actions related to noise exposure assessment, noise mapping, and harmonization of noise indicators in the environment.

Based on the document "Green Book - Future noise policy," the European Commission formed a working group in 1998. The main reason for the formation of the working group was to define noise indicators that would be used in the European Union to describe all noise sources, and for its assessment, mapping, planning, and control. As a result of three years of work on the development of noise indicators, in 2002, The Environmental Noise Directive (abbr. END) 2002/49/EC was created. Directive 2002/49/EC of the European Parliament and the Council regulates activities relating to [8]:

- noise assessment through the development of strategic noise maps using harmonized noise indicators and methods,
- development of action plans for maintaining noise levels in environment that are within the permissible level,
- establishing a noise level database and
- ensuring that information on environmental noise and its effects are made available to the public.

Today, the list of European Union regulations in the field of noise protection includes 13 acts of different legal force, among which the most important is Directive 2002/49/EC. Two international projects, "Harmonise" and "Imagine," have emerged from the mentioned Directive. The purpose of these projects was to develop a harmonized noise impact assessment methodology in all EU Member States. The methods defined by these projects are not officially proposed for noise assessment. It is currently recommended that "Common Noise Assessment Methods in Europe (abbr. CNOSSOS-EU)" developed in 2012 by the European Commission be used for noise assessment. The focus of this methodology is on the evaluation of road, rail, and air traffic noise, as well as industrial noise [9].

To form documents at the local, regional and national levels that relate to the current state of environmental noise pollution and whose purpose is to create - remediation of public health, it is essential to know accurate data on annual values of noise indicators. The noise indicator is an acoustic quantity that describes the noise in the environment [10]. When assessing noise levels, it is crucial to consider the variations of noise levels for 24 hours. According to those variations, three fundamental indicators appear:

- daily noise level measured from 6 am - 6 pm (LA_{day}),
- evening noise level measured from 6 pm – 10 pm ($LA_{evening}$), and
- night noise level measured from 10 pm – 6 am (LA_{night}).

Based on the above indicators, it is possible to evaluate LA_{den} indicator, which represents a standard European indicator. LA_{den} serves to define the average noise level throughout the day, evening, and night, to which a citizen is exposed during the year. This indicator is determined by mathematical relation 1 [11]:

$$LA_{den} = 10 \log \frac{1}{24} \left(12 \times 10 \times \frac{LA_{day}}{10} + 4 \times 10 \times \frac{LA_{evening} + 5}{10} + 8 \times 10 \times \frac{LA_{night} + 10}{10} \right) \quad (1)$$

The defined indicator is characterized, such as annually sound pressure level expressed in dB(A). These values are derived from the sound pressure level in dB, applying the so-called A-weighting.

Noise regulations in the Republic of Serbia

The Republic of Serbia, as a candidate for membership in the European Union, needs to harmonize its legislation and bylaws with EU legislation. During Serbia's integration into the EU, the area of noise is not at the top of the priority of actions. Still, the government manages to harmonize the appropriate legal regulations with Directive 2002/49/EC. The essential legislation in the field of noise management in Serbia is laws, regulations, and rulebooks. Besides, determination of the value of fundamental noise indicators performs following the standards SRPS ISO 1996-1 and SRPS ISO 1996-2 [12]. Relevant documents from the analyzed area are shown in Table 1.

Table 1 Noise legislation in the Republic of Serbia

Name	Place and year of publication
Law on Noise Protection	Official Gazette of RS, No 36/2009 and 88/2010
Regulation on noise indicators, limit values, noise indicators assessment methods, annoyance and harmful effects of environmental noise	Official Gazette of RS, No 75/2010
Rulebook on methodology for determining the acoustic zone	Official Gazette of RS, No 72/2010
Rulebook on the methods of noise measurement, content and scope of the noise measurement reports	Official Gazette of RS, No 72/2010
Rulebook on the methodology for the action plan development	Official Gazette of RS, No 72/2010

Table 1 (continued)

Name	Place and year of publication
Rulebook on the conditions to be fulfilled by a professional organization for noise measurement, and documentation to be submitted with application for acquiring the authorisation for noise measurement	Official Gazette of RS, No 72/2010
Rulebook on the content and method of development of noise maps and the manner of their presentation to the public	Official Gazette of RS, No 80/2010
Rulebook on noise emitted by the equipment used in the open space	Official Gazette of the RS, No 01/2013
SRPS ISO 1996-1: 2016 Acoustics - Description, measurement and assessment of environmental noise - Part 1: Basic quantities and assessment procedures	Institute for Standardization of Serbia, 2010
SRPS ISO 1996-2: 2010 Acoustics - Description, measurement and assessment of environmental noise - Part 2: Determination of sound pressure levels	Institute for Standardization of Serbia, 2010

It is important to emphasize that Directive 2002/49/EC has only been partially transposed by the Law on Environmental Noise Protection and its accompanying bylaws. At the same time, its full implementation is planned by the end of 2021 [13].

Following the mentioned legal documents, noise limit values have been defined in the Republic of Serbia. The permissible noise limits represents the highest allowed value of noise indicators (LA_{day} , $LA_{evening}$, and LA_{night}). Depending on some criteriums (the noise source, an outdoor or indoor space, space's use, etc.), the permissible noise limits differ.

As the aim of this paper is to simulate traffic noise pollution at specific locations in the Kragujevac city, table 2 shows only the limit values of noise indicators in the outdoor space.

Table 2 Limit values of outdoor noise indicators [10]

Zone	Use of space	Level of noise dB (A)	
		$LA_{day} / LA_{evening}$	LA_{night}
1.	Leisure and recreation areas, hospital zones, cultural and historical spots, large parks	50	40
2.	Tourist areas, small settlements and villages, camps and school zones	50	45
3.	Purely residential districts	55	45
4.	Combined business and residential districts, combined commercial and residential districts and playgrounds	60	50
5.	The city center, craftsman, commercial and administrative areas with housing, zones along highways, main roads and city traffic arteries	65	55
6.	Industrial, storage and service areas and transport terminals without residential buildings	At the border of this zone, the noise must not exceed the limit value in the zone with which it borders	

As already explained, noise indicators are physical quantities that describe noise in the environment. If the value of the indicators is higher than the values given in the previous table, then the noise harms human health, and it is considered that the population at that location is endangered by noise.

CASE STUDY: TRAFFIC ROAD NOISE IN KRAGUJEVAC

The city of Kragujevac belongs to the group of medium-sized cities, with 179,417 inhabitants [14]. During the past decades, the increase in traffic capacity on city roads affects that most residents in cities live in acoustically non-conformal zones. Thus, it is necessary to identify deviations of noise levels in Kragujevac comparing the real and the maximum allowed levels to simulate noise pollution from traffic.

Based on the analysis, it is concluded that the traffic-geographical position of the Kragujevac city is exceptionally favorable. This statement is explained by the city's position in the traffic corridor, which connects the southern, southwestern, and western parts of the country with the northeastern and northern areas of Serbia. State roads of I and II order and municipal roads form the road network of the city of Kragujevac. Namely, on the road network, there are city arterial highways, city roads, and collecting roads.

For this research, city roads are essential, which are intended for medium and long city's trips. They connect collection roads with highways and residential zones with the city center and other facilities, serving most of the local traffic and introducing intercity's roads in the city [15].

Motorized and non-motorized road traffic takes place on city roads in Kragujevac. In recent years, there has been an increase in motorized traffic load. In addition to the increase in the number of passenger vehicles daily, there is also an increase in freight traffic and public passenger transport. The street network in the city area have inappropriate profiles, making it impossible for pedestrian and bicycle traffic to run smoothly, which is characterized as non-motorized traffic.

In Kragujevac's territory, the traffic regime is not restrictive, and most of the roads operate in a two-way regime. On the city traffic network, direct intersections are regulated by light signals or by horizontal signalization.

The purpose of the movement of passengers is diverse. However, in the peak period of the day, the purposes of movement related to going to work and the school have a very dominant share of almost 95 % of the total movement.

The increase in traffic load also caused an increase in traffic noise emissions. The emission level of traffic noise on the Kragujevac territory depends on the following factors [16]:

- traffic load (number of vehicles / h),
- traffic flow structures (passenger, freight, buses, etc.),
- vehicle speeds,
- traffic flow management (braking, acceleration),
- characteristics of streets (road surface layer, ascent, curvature),
- techniques' conditions of vehicles (engine insulation, tires, exhaust systems),
- driving style and engine load.

Noise determination in Kragujevac performs at six measuring points considered to be the busiest in the city. The measurement is performed by organizations that meet the requirements for environmental noise measurements. In Kragujevac, the organization that meets those conditions is the Institute of Public Health. During the measurement, the day and night noise level is monitored, as well as the number of heavy and light vehicles. The results of noise measurements on an annual basis are forwarded to the Environmental Protection Agency of the Republic of Serbia. At the same time, the local self-government publishes them in the Environmental Bulletin. All recent measurements of noise levels in Kragujevac show exceedances during the observed period. Measured values of noise levels could harm the health of citizens [15].

Specific locations in Kragujevac

The subject research is based on measuring the parameters of road traffic noise at three specific locations on the territory of the city of Kragujevac. Measurements were performed at three locations in the city where it was estimated that the impact of noise caused by traffic, as well as other communal activities, was the greatest. The listed locations are:

- SL1 - a four-way intersection of streets: Nikola Pašić and Dr Zoran Đinđić,
- SL2 - a four-way intersection of streets: Radoje Domanović, Kralja Milana, Milentija Popović and Potporučnika Govedarice,
- SL3 - a four-way intersection of streets Bulevar Kraljice Marije and Daničićeva.

Figure 2 shows the analyzed locations in the broader area of the city.



Figure 2 Analyzed locations in the broader area of the city

The locations selected for the subject research are characterized by very intensive road traffic. Near the analyzed locations, there are residential buildings with high housing density, business facilities, scientific and educational institutions, health, and other public institutions, such as the administrative building of the local self-government unit in Kragujevac.

Figure 3 presents four approaches to intersections that include possible directions of traffic flows through the intersection, marked with arrows and numbers (1, 2, 3, and 4).

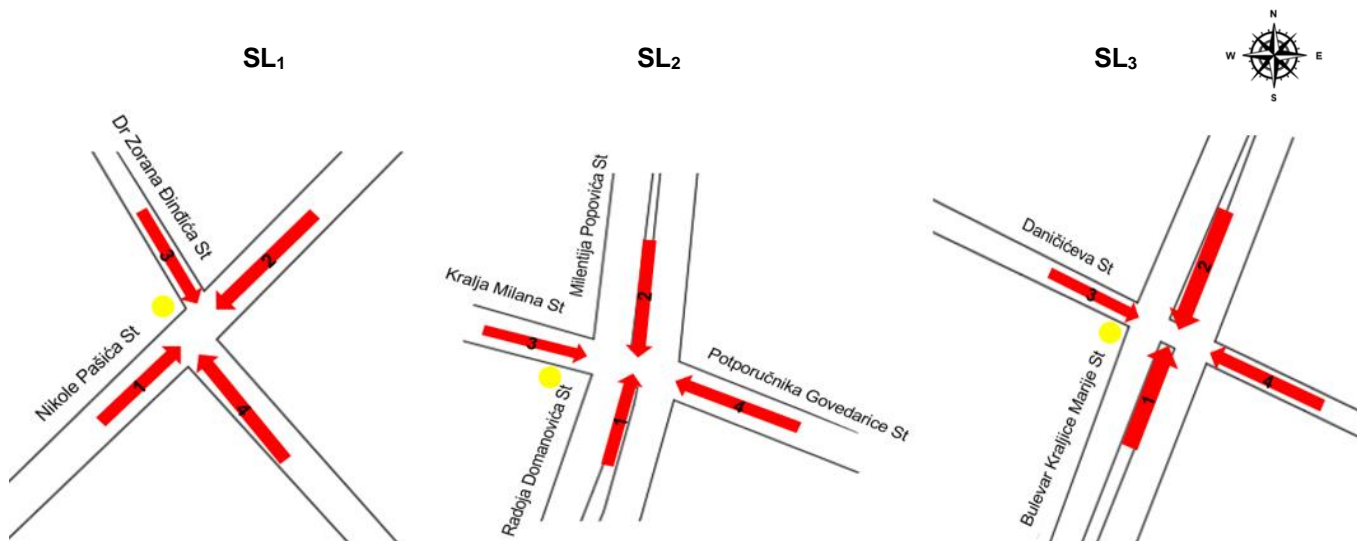


Figure 3 Traffic directions at the analyzed locations

The basic characteristics of the analyzed roads are shown in Table 3.

Table 3 Characteristics of analyzed roads

	SL ₁	SL ₂	SL ₃
Geographical characteristics	The terrain on approaches 1,4,2 is flat, while approach 3 is under a slope, i.e., an ascent depending on the movement's direction.	The terrain of approaches 1 and 3 is flat, while approaches 2 and 4 are falling or rising, depending on the direction of movement.	The terrain of approach 1 is flat, while approaches 2, 3, and 4 are falling or rising depending on the direction of movement.
Characteristics of the space/ objects in the analysed area	Residential buildings, catering facilities, business facilities, public buildings, etc.	Residential buildings, catering facilities, business facilities, educational institutions, etc.	Residential buildings, catering facilities, business facilities, etc.
Characteristics of the road	Two-way traffic takes place on the approaches to all traffic routes. Approaches 1,2, and 4 have three lanes, while approach 3 has two lanes per road. The main surface of the road is asphalt. Vertical traffic lights regulate traffic at the intersection.	Two-way traffic takes place on the approaches to all roads. The number of lanes is four for directions 1, 2, and 4, while direction 3 has three lanes. The main surface of the road is asphalt. Vertical traffic lights regulate traffic at the intersection.	Two-way traffic takes place on the approaches to all roads. The number of lanes is four for roads 1 and 2, while directions 3 and 4 have three lanes. The main surface of the road is asphalt. Vertical traffic lights regulate traffic at the intersection.

It is already said that the emission level of traffic noise depends on factors such as traffic load. Consequently therefore, when modeling noise levels in urban areas is performed, besides the characteristics listed in the table, one of the essential characteristics of road traffic is the load on the road or the traffic flow. The flow of traffic can be most easily defined as the number of vehicles that pass through the center of the analyzed intersection in a unit of time. This characteristic of road traffic can be determined by traffic-counting. Traffic-counting is extremely important when planning traffic in cities and creating spatial and urban plans. Thanks to the counting of traffic, which can be manual and automatic, data on the intensity and structure of traffic flows are obtained. Besides, traffic counting is important for planning the future size of roads and intersections.

For this research, manual traffic counting was conducted at specific locations. Vehicle frequency measurement was performed according to the specified flows, i.e., traffic direction for each intersection (1, 2, 3 and 4). The counting

was static, i.e., the counting of vehicles passed through a particular section of the road in a specific time interval was performed. A simple counting pattern was used for counting, on which a mark was placed after the vehicle passed, depending on the direction of movement and the type of vehicle.

The vehicle counting pattern is shown in Figure 4.

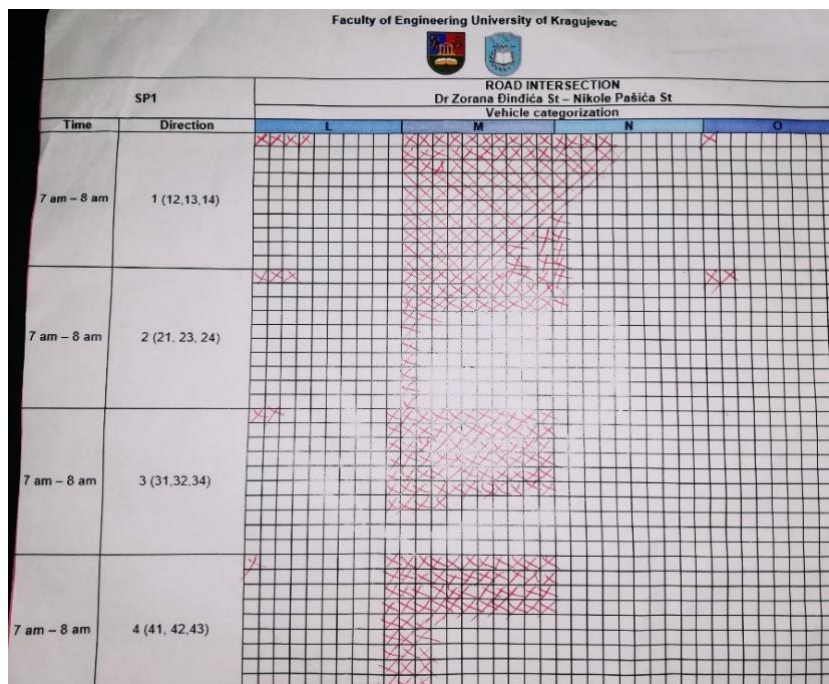


Figure 4 Representative form used for manual traffic-counting on SL₁

Traffic-counting is conducted at specific locations along the roads and during peak hours. Peak hours hour with the most significant volume of traffic during working hours of the day. In the Republic of Serbia, the peak hour is 8 - 10 % of the total daily traffic and occurs in the morning from 7 – 8 o'clock and the afternoon from 15 – 16 o'clock. The measured traffic load during peak hours is shown in Figure 5.

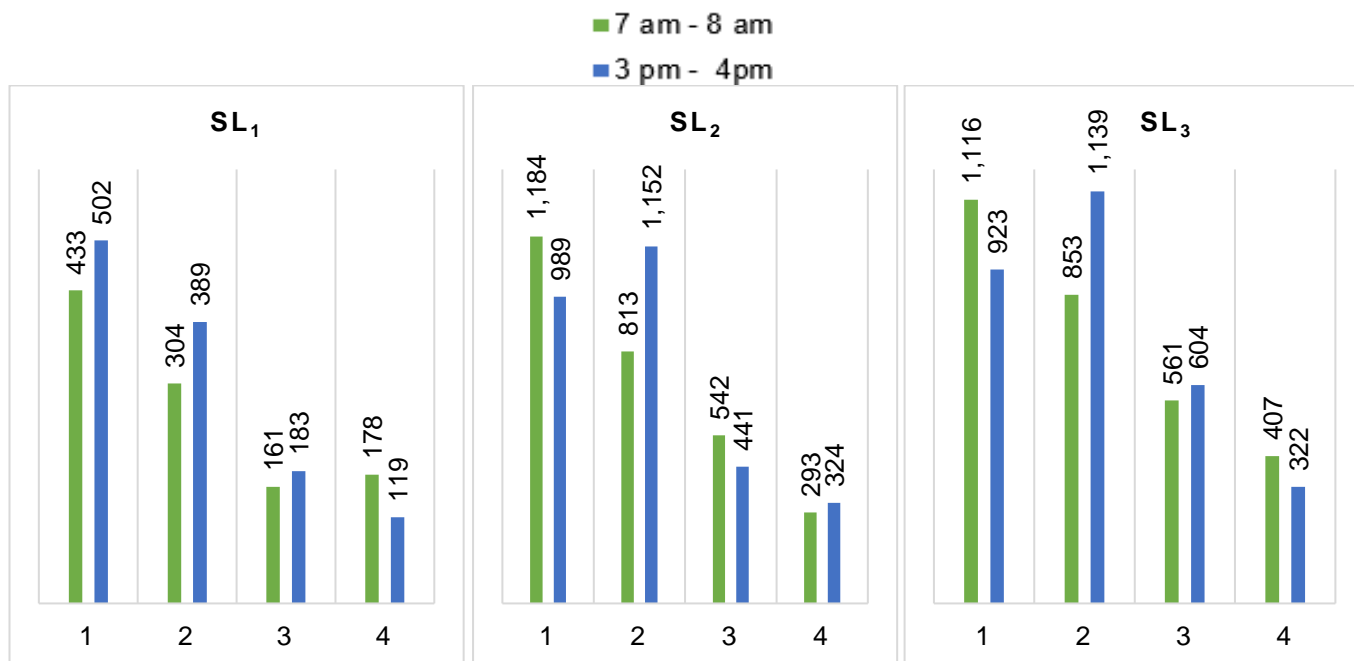


Figure 5 Counted traffic load during peak hours at specific locations

It is mentioned that the emission level of traffic noise also depends on traffic flow structures. So, the manual traffic-counting is conducted according to vehicle categorization. In the Republic of Serbia, vehicle categorization is defined by the Rulebook on Classification of Motor Vehicles. The categories of vehicles that are used in this research are [17]:

- L – 2-wheel, 3-wheel and 4-wheel vehicles (mopeds, motorcycles, tricycles and quadricycles),
- M – passenger-carrying vehicles, abbr. PCVs (cars and buses),

- N – goods-carrying vehicles (lorries and vans),
- O – trailers and semitrailers.

These categories are analyzed because the noise emission of different vehicle categories varies greatly. In the road vehicles, it can be distinguished the numerous sources of noise depends on the vehicle category. The primary sources of noise in the road vehicles are engine, powertrain, tires cooperating with the road surface, the flow of liquids and gases in systems and installations of the vehicle, a vibration of the vehicle and its components, etc. For that reason, the United Nation's Economic Commission for Europe (abbr. UNECE) has published regulations which are related to road vehicle noise. Regulations developed by UNECE defines limit values for pass-by noise of road vehicles. In the Republic of Serbia, limit values of allowed exterior noise emitted by different category of road vehicles in laboratory conditions are determined in Rulebook on the classification of motor vehicles and trailers and specifications for vehicles in road traffic.

Both the regulations of the European Union and the regulations of the Republic of Serbia do not define the limit values of noise emitted by O category of vehicles. It can be explained by the fact that this category of vehicles is pulled and not autonomous. However, the O category of vehicles is taken during this analysis because it has an impact on the overall traffic noise. That impact is visible through the cooperation of the wheels with the road surface and the airflow around the O vehicle.

The counted vehicle categories in the analyzed locations are given in Figure 6.

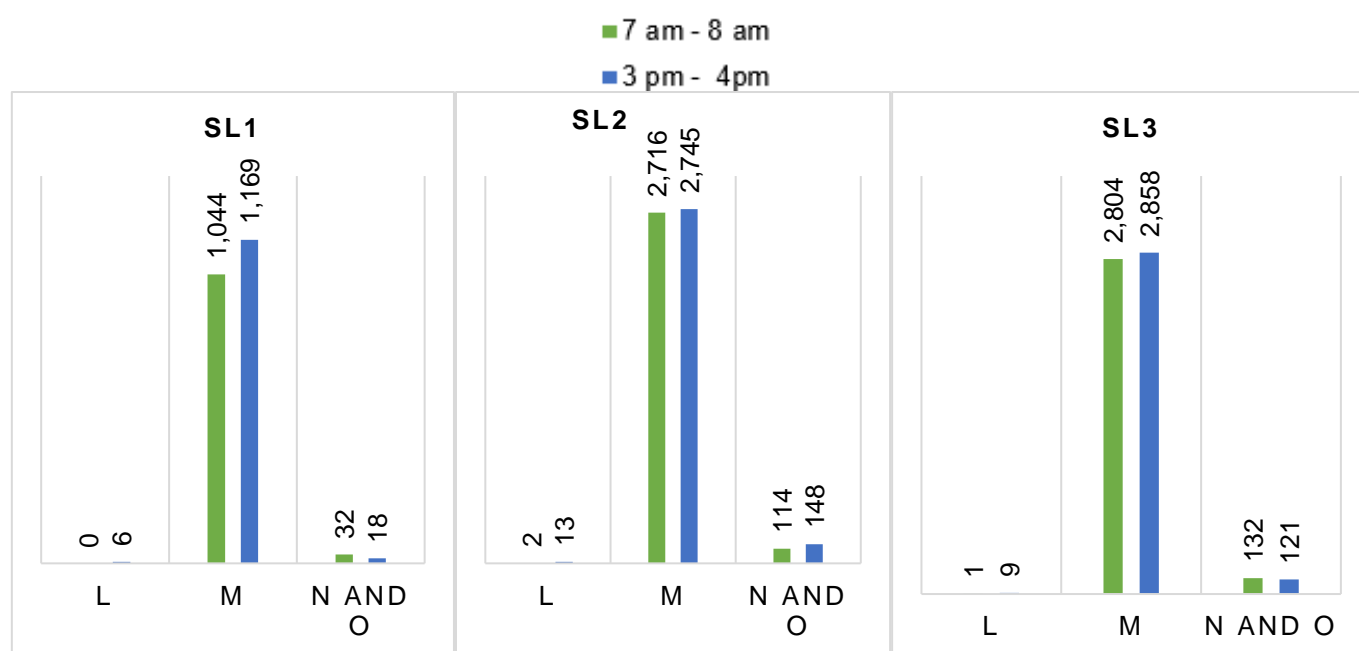


Figure 6 Counted traffic load according to vehicle categories

The traffic load on the Kragujevac's street network has a growth trend, with the share of PCVs in the structure of traffic flows more than 90%.

Noise level monitoring

To perform a simulation of noise pollution, it is first necessary to determine the sound pressure levels at the analyzed locations. The measurements were performed using appropriate types of equipment. Brüel & Kjær 2250 sound level meter and the Open Noise Mobile Application were used to measure the equivalent noise level (abbr. LAeq). LAeq is the equivalent sound level of the last range of time setted (0.5, 1 or 2 seconds), expressed in dB(A).

The measurement was performed continuously for 10 minutes along mentioned streets in the peak periods: in the morning from 7 - 8 o'clock and in the afternoon from 3 - 4 o'clock. By such measurement, LAeq values were obtained based on LAeq values with sampling rate of 1 second.

The position of the phonometer used was as in Figure 7. Namely, the noise measurement was performed at a height of 1.5 m, while the distance of the phonometer from the edge of the road was 1.5 - 2 m. Phonometer was distanced 1.2 - 2 m from the nearest building in the area. The phonometer's position was identical in all three locations, i.e., on the corner of the street, which is directed to the south-west. The measuring points at analyzed locations are marked with yellow points in Figure 3. These points were chosen arbitrarily by the authors.

Based on the next figure, it can be seen that the height of buildings is not taken into consideration during noise level monitoring as well as modeling.

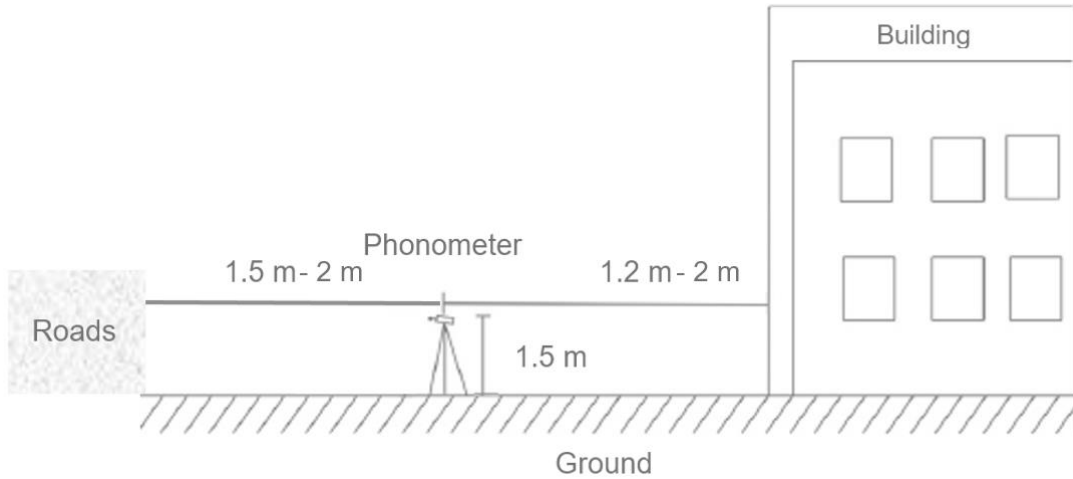


Figure 7 Position of the phonometer during monitoring

At specific location 1, the morning's noise level varies from 46.9 dB (A) to 80.1 dB (A), which is shown in Table 4. During the noise measurement that lasted 10 minutes, the equivalent noise level was 69.6 dB (A), which will be taken into account when simulating noise pollution. At the same specific location, in the afternoon, the minimum average value of environmental noise in this zone was 54.5 dB (A), while the maximum value was 84.9 dB (A). For the equivalent noise level in this period, 75.7 dB (A) was obtained.

Table 4 Results of measurements of noise levels at SL₁

SL ₁						
Time of measurement	7 am – 8 am			3 pm – 4 pm		
Noise level [dBA]	L _{Amin}	L _{Aeq(t)}	L _{Amax}	L _{Amin}	L _{Aeq(t)}	L _{Amax}
	46.9	69.6	80.1	54.5	75.7	84.9
Graphics						

The second specific location records higher noise levels, which is explained by the fact that the road that passes next to the place where the measurements were made is a transit road to which most freight traffic is directed. As shown in table 5, in the period from 7 am - 8 am, the minimum and maximum value of environmental noise in this zone was 46 dB (A) and 88.1 dB (A), respectively. During the analyzed period, L_{Aeq} was 84.2 dB (A). Slightly higher values were recorded in the afternoon, where a value of 86.8 dB (A) was obtained for the equivalent noise level.

Table 6 shows the results of noise monitoring at the third specified location. The equivalent noise levels used in the noise pollution simulation are 80.9 dB (A) for the morning peak's hours and 84.2 dB (A) for the afternoon peak's hours.

In the graphics shown in previous tables, the measurement time is the independent variable, and it belongs on the x-axis (horizontal line) of the graph. At the same time, measured noise level is the dependent variable and it belongs on the y-axis (vertical line). Negative values in the x-axis are useful for viewing the monitoring history of results. The zero value corresponds to the instantaneous data at the moment of measuring, while negative values correspond to the results in the past. Positive values would represent the future, but that is impossible to predict. It can be seen that graphs show significant variations in the noise level in a sampling rate of 1 second – L_{Aeq}(1s). Some noisy

occurrences on the roads such as car horns, car alarms, etc. cause that the noise indicator at the moment of averaging exceeds the equivalent mean noise values.

Table 5 Results of measurements of noise levels at SL₂

SL ₂						
Time of measurement	7 am – 8 am			3 pm – 4 pm		
Noise level [dBA]	L _{Amin}	L _{Aeq(t)}	L _{Amax}	L _{Amin}	L _{Aeq(t)}	L _{Amax}
	46.0	84.2	88.1	54.8	86.8	92.3
Graphics						

Table 6 Results of measurements of noise levels at SL₃

SL ₃						
Time of measurement	7 am – 8 am			3 pm – 4 pm		
Noise level [dBA]	L _{Amin}	L _{Aeq(t)}	L _{Amax}	L _{Amin}	L _{Aeq(t)}	L _{Amax}
	41.6	80.9	85.8	54.0	84.2	89.2
Graphics						

Comparing the results shown in Tables 4, 5 and 6 with the values defined by Regulation on noise indicators, limit values, noise indicators assessment methods, annoyance and harmful effects of environmental noise and which are shown in Table 2, it is concluded that in critical periods at the analyzed locations in Kragujevac, the noise level $L_{Aeq}(t)$ is significantly higher than allowed. The maximum permissible noise level for analyzed locations is 65 dB (A) for day/evening while $L_{Aeq}(t)$ for night is 55 dB (A). As the primary source of noise at the analyzed locations, traffic stands out. This can be proven by measured traffic load during peak hours.

SIMULATION OF ROAD TRAFFIC NOISE POLLUTION

The software used for simulation of road traffic noise pollution on the territory of the Kragujevac territory was QGIS 3.10.2. This software presents a free and open-source cross-platform desktop geographic information system application that supports viewing, editing, and analyzing geospatial data.

Simulation of road traffic noise pollution starts with the importation of the orthophoto map of Kragujevac in the appropriate coordinate system. In this case, the coordinate reference system is set on EPSG:3909 - MGI 1901 / Balkans zone 7 – Projected.

To model the environmental noise generated by road traffic in Kragujevac, two essential layers are created [18]:

- Buildings, and
- Roads.

The first layer defined the buildings that were created as polygons. The buildings were drawn based on the already entered orthophoto map of the city of Kragujevac. The purpose of the building was not taken into account when drawing it. The roads are defined as the second layer. This layer represents the emission source of the traffic noise, and the type of the roads layer is a line type. When defining the second layer, it was necessary to define the traffic load for each direction using the attribute table.

Software QGIS has many plugins. One of them is opeNoise, which allows users to compute the noise level generated by point source or by road source at fixed receiver points and buildings used in this research. The first step in noise modeling is to make receiver points. These points are chosen automatically by software. Receiver points can be created for each facade or equidistant receiver point along the facade. The facade is a layer created as a polygon, i.e., buildings. In this case, receiver points were determined on half of each building's facade in the vicinity of analyzed intersections.

Then, it is necessary to determine the noise level at receiver points generated by road sources (a line layer). For each road, the sound pressure level is calculated based on the data already mentioned (noise level, traffic load, road slope, type of terrain, etc.). The results are written in the attribute table of the receiver point layer and expressed in dB(A). If the level is not calculated or is less than zero, the value -99 is assigned [19]. In the last step, the noise levels are calculated for each receiver point to the corresponding building. The value assigned to the building is the maximum value among all the receiver points for that building.

Simulations were performed for different periods, more precisely for data from the morning hours and for data from the afternoon hours.

The simulation of road traffic noise pollution in Kragujevac at three specific locations is shown in Figure 8.

Buildings are marked with different colors depending on noise levels. According to the previous picture, it can be concluded that the highest noise level is noted at the points of the facades of buildings located at the intersection as well as the noise level of these buildings is at the highest level. Buildings that are at intersections are exposed to noise levels that are over 80 dB(A) during peak hours. This fact leads to the conclusion that analyzed locations are very polluted by the noise.

Accompanying the legal regulations in the Republic of Serbia, the noise on the facade of analyzed facilities should not exceed 65 dB (A). The analyzed buildings are classified as the most noise-endangered buildings due to their location along the city's busiest roads.

The comparison of measured and modeled data is performed. In that case, it can be concluded that there are certain deviations due to which this simulation cannot be officially proposed for noise assessment and planning.

Representative Figure 9 shows the building at the specific location 1 during the morning hours. It is noticed that the receiver points on one building have different noise levels. For example, on the shown building in Figure 9, there are a total of three receiver points where the noise level is higher than 80 dB(A), then one point where the noise level is 75 - 79 dB(A), one where the level is the noise of 65 - 69 dB(A) and one receiver points to which the software assigned a noise level of 50 - 54 dB(A). The simulation shows that the entire analyzed building is exposed to a noise level greater than 80 dB(A) because the noise assigned to the building is the maximum value among all the receiver points for that building.

This type of simulation is sometimes not suitable because in this way it would be concluded that the inhabitants of a building are exposed to equal, maximum levels of traffic noise, which is not correct. In order to avoid these deviations and irregularities, it is recommended that in future research, noise measurements be performed in several different places at specific locations in order for the simulation to be valid.

Anyhow, people living in the buildings covered by this research are exposed to high noise levels. The population which lives at analyzed locations represents a vulnerable group which is affected by noise pollution. Simulated noise levels can have permanent and temporary consequences for public health. Noise-induced health disorders are an expression of a physiological response to stress, most of which are transient and short-lived (disorders of the cardiovascular, digestive and immune systems, decreased attention and memory, narrowed visual field), but which can become chronic (insomnia, high blood pressure, anxiety, depression). All of the above severely impairs the general health of individuals, quality of life, and social communication. To avoid the potential consequences for public health, it is necessary to undertake specific measures to reduce noise in the analyzed locations.

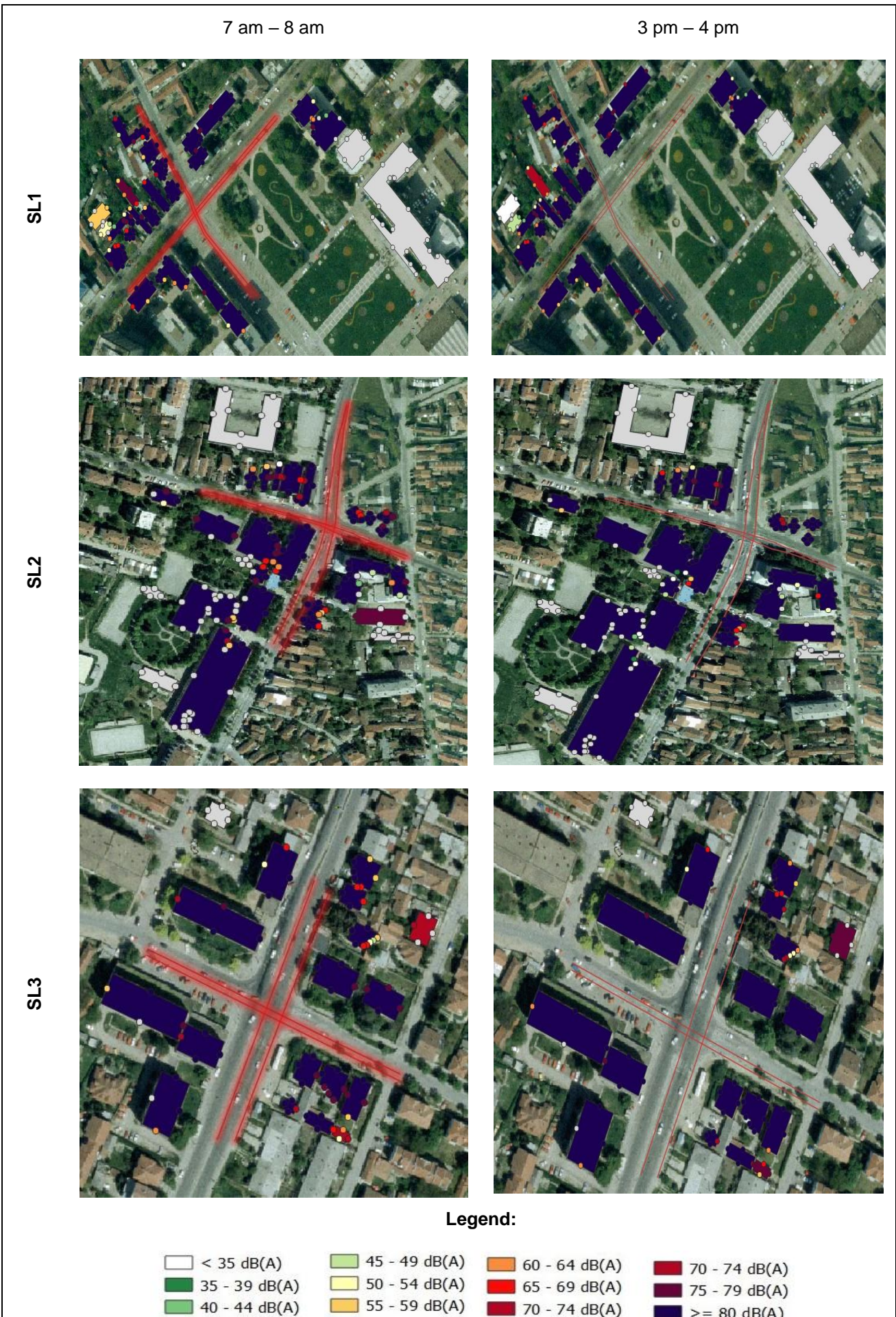


Figure 8 Simulation of road traffic noise pollution in Kragujevac at three specific locations



Figure 9 Representative building with receiver points

CONCLUSIONS

Road traffic noise pollution has been recognized as a new threat to the population in urban areas.

For the needs of simulation of noise pollution on the territory of the city of Kragujevac, noise monitoring in the environment was performed.

Noise levels were measured at three specific locations, more precisely at intersections formed by roads characterized by intensive road traffic. The measurement was performed for 10 minutes during peak hours of 7am - 8 am and 3 pm - 4 pm. In the same period, manual measurement of traffic load was performed.

The results of measuring noise levels in Kragujevac show that the levels of communal noise are high. In almost all measuring points, noise levels exceeded the prescribed values for the areas of purpose - The city center, craftsman, commercial and administrative areas with housing, zones along highways, main roads and city traffic arteries which are 65 dB (A) for day/evening. The absolute highest noise was found at the measuring point of the specific location SL2, where the equivalent noise level reaches the value of 86.8 dB (A) in the afternoon. Using the results of field noise measurements and analysis of the traffic regime, i.e., traffic load at the observed locations, a simulation of noise pollution was performed. The simulation was performed in QGIS software using the opeNoise plugin. After the simulation, receiver points were determined on half of each building's facade located in the vicinity of the intersection, and the noise level was determined on the same. After that, a certain noise level was added to each building. The value assigned to the building is the maximum value among all the receiver points for that building.

Research like this shows the traffic noise modeling that reveals the areas where the environmental noise values are high enough to disturb different aspects of residents' lives in the analyzed city.

In order to improve the existing situation and minimize noise pollution in the city of Kragujevac, which was observed by modeling, it is considered that it is necessary to take specific measures. By reducing noise levels at sources altogether with methods to protect the urban population from noise exposure, practical actions can be done [20].

Measures that can be applied in order to reduce noise primarily are: control and change of traffic regime. This measure can be implemented through compliance with speed limits, improvement of pedestrian zones, the formation of so-called ecological traffic lights with notification for drivers - "Please turn off the engine", etc. There are also high-budget measures that would significantly reduce the current noise pollution in Kragujevac, such as the construction of a bypass for trucks, which will direct all freight traffic outside the central zones.

As the primary source of noise is road traffic, it is necessary to pay attention to the level of noise emissions emitted by each vehicle. Today, vehicles are manufactured in accordance with the standard that meets the maximum levels of noise emissions from vehicles. However, there is a problem with old vehicles that are still moving on the streets, and it is necessary to apply stricter restrictions in technical inspections of vehicles. Also, it is possible to introduce special taxes for noisier vehicles at the local level or to apply exclusion from the traffic of vehicles with excessive noise.

In addition to the above measures, it is possible to install protective sound barriers along congested roads and to implement zoning with the greening of settlements, which, in addition to improving the microclimate, also affects the protection of the population of Kragujevac from noise. In order to protect against noise, the residents of Kragujevac

can install sound insulation on their buildings. Also, they can use personal protective equipment for reducing noise exposure, but that is not a long-term solution.

This kind of research represents the beginning and the base for further elaborating noise pollution mapping on the territory of the entire city of Kragujevac and the development of strategic noise maps.

The development of a strategic noise map in Kragujevac would greatly facilitate noise management at the local level. Namely, strategic noise maps contain data on the state of noise in the environment, such as the current, previous and estimated noise level in the environment expressed by noise indicators, places of exceeding the prescribed limit values, but also an estimate of the number of people and households, schools and hospitals in a specific area that are exposed to noise above the prescribed limit values, etc. The creation of a strategic noise map would significantly help and facilitate the further planning of traffic development in Kragujevac, which needs to be implemented as soon as possible because the current Traffic Development Strategy lasts until 2022.

ACKNOWLEDGMENTS

This research has been supported by the Ministry of Education, Science and Technological Development, Republic of Serbia (Project III 42013).

REFERENCES

- [1] United Nations, Department of Economic and Social Affairs, Population Division: "World Population Prospects 2019 – Highlights", (ST/ESA/SER.A/423), 2019, New York, SAD, 46, ISBN: 978-92-1-148316-1.
- [2] United Nations, Department of Economic and Social Affairs, Population Division: "World Urbanization Prospects - The 2018 Revision", (ST/ESA/SER.A/420), 2019, New York, SAD, 126, ISBN: 978-92-1-148319-2.
- [3] European Commission - Science for Environment Policy: "Future Brief: Noise abatement approaches", Issue 17, 2017, University of the West of England, Bristol, 28, Doi: [10.2779/016648](https://doi.org/10.2779/016648).
- [4] Tobías, A., Recio, A., Díaz, J., & Linares, C.: "Health impact assessment of traffic noise in Madrid (Spain)", *Environmental Research*, Vol. 137, 2015, pp. 136–140. Doi: [10.1016/j.envres.2014.12.011](https://doi.org/10.1016/j.envres.2014.12.011).
- [5] World Health Organization Regional Office for Europe: "Environmental Noise Guidelines for the European Region", 2018, Copenhagen, Denmark, ISBN: 978-92-890-5356-3.
- [6] Murphy, E., & King, E.A.: "Environmental Noise Pollution", 1st Edition, 2014, Elsevier, eBook ISBN: 978-01-2-411614-6.
- [7] European Commission: "Future Noise Policy - European Commission Green Paper", COM(96) 540 final, 1996, Brussels, Belgium.
- [8] European Commission: "Directive 2002/49/EC of the European Parliament and of the Council of 25 June 2002 relating to the assessment and management of environmental noise", *Official Journal of the European Communities*, OJ L 189, 2002, Brussels, Belgium.
- [9] Kephelopoulos, S., Paviotti, M., Anfoso-Lédée, F.: "Common noise assessment methods in Europe (CNOSSOS-EU)", EUR 25379 EN, Luxembourg: Publications Office of the European Union, 2012, pp. 180, Ispra, Italy.
- [10] The Government of the Republic of Serbia: "Regulation on noise indicators, limit values, noise indicators assessment methods, annoyance and harmful effects of environmental noise", *Official Gazette of the Republic of Serbia*, No 75/2010, 2010, Belgrade, Republic of Serbia.
- [11] European Environment Agency: "Noise in Europe 2014", Luxembourg: Publications Office of the European Union, EEA Report No 10/2014, 2014, pp 68, Luxembourg, Doi: [10.2800/763331](https://doi.org/10.2800/763331).
- [12] Mihajlov, D.: "Multi-criteria optimization of the selection of the measurement strategy for the assessment of the long-term environmental noise indicators", PhD dissertation in Serbian language, 2016, Faculty of occupational safety, University of Niš, Niš, Republic of Serbia.
- [13] Coalition 27: "Chapter 27 in Serbia: No-Progress Report", Young researchers of Serbia, 2018, Belgrade, Republic of Serbia.
- [14] Statistical Office of the Republic of Serbia: "Municipalities and regions of the Republic of Serbia", *Statistical Office of the Republic of Serbia*, 2019, Belgrade, Republic of Serbia, ISSN 2466-3824.
- [15] Local government - City of Kragujevac: "Traffic development strategy of the city of Kragujevac 2012-2022", in Serbian language, 2012, Kragujevac, Republic of Serbia.
- [16] Institute for public health in Belgrade: "Route noise measurement on territories of the municipality of Obrenovac during November 2013", Unit for quality assurance, control and testing of environment, 2013, Belgrade, Republic of Serbia.
- [17] Official Gazette of the Republic of Serbia: "Rulebook on Classification of Motor Vehicles and Trailers and on Specifications for Vehicles in Road Traffic", *Official Gazette of RS* no 40/2012, 102/2012, 19/2013, 41/2013, 102/2014, 41/2015, 78/2015, 111/2015, 14/2016, 108/2016, 7/2017 - revise, 63/2017, 45/2018, 70/2018, 95/2018, 104/2018 and 93/2019.

- [18] Șorea, I., Stoleriu, C.C., Ursu, A.: "Road Traffic Noise Modeling. Case Study: Vaslui Town, North-Eastern Romania", Air and Water – Components of the Environment Conference Proceedings, 2019, Cluj-Napoca, Romania, pp. 375-384. Doi: [10.24193/AWC2019_37](https://doi.org/10.24193/AWC2019_37).
- [19] QGIS - A Free and Open Source Geographic Information System, Internet address: „www.qgis.org“, Date of Access: 10th July, 2020.
- [20] Ivanović, L., Josifović, D., Ilić, A., Stojanović, B., Rakić, B.: "Noise as aspects of life quality at urban areas", 8th International Quality Conference, 2014, 23 May, Kragujevac, Serbia, pp. 175-182.

