



# 41st Danubia-Adria Symposium

Advances in Experimental Mechanics

September 23-26, 2025

Kragujevac, Serbia

## PROCEEDINGS



Edited by:  
**Miroslav Živković**  
**Vladimir Milovanović**  
**Vladimir Dunić**  
**Aleksandar Bodić**

<https://www.das2025.fin.kg.ac.rs/>

# **41st** Danubia-Adria Symposium

## **Advances in Experimental Mechanics**



# **PROCEEDINGS**



**September 23-26, 2025  
Kragujevac, Serbia**

**Edited by:  
Miroslav Živković  
Vladimir Milovanović  
Vladimir Dunić  
Aleksandar Bodić**

# **41<sup>ST</sup> DANUBIA-ADRIA SYMPOSIUM ADVANCES IN EXPERIMENTAL MECHANICS**

**ISBN: 978-86-6335-157-8**

**DOI: 10.46793/41DAS2025**

**Edited by:** **Miroslav Živković, Vladimir Milovanović,  
Vladimir Dunić, Aleksandar Bodić**  
Faculty of Engineering University of Kragujevac

**Publisher:** **Faculty of Engineering University of Kragujevac**

**For the publisher:** **Slobodan Savić**  
Faculty of Engineering University of Kragujevac

**Place and year of  
publication** Kragujevac, 2025

**Technical editor:** **Aleksandar Bodić, Vladimir Milovanović**  
Faculty of Engineering University of Kragujevac

**Printed by:** **Inter Print**  
Juriša Gagarina 12, 34000 Kragujevac, Serbia

**Circulation:** 100 Copies

Copyright © 2025 by Faculty of Engineering University of Kragujevac



This book is published online with Open Access and distributed under the terms of the Creative Commons Attribution Non-Commercial License 4.0 (CC BY-NC 4.0)

The publication of this Proceedings was financially supported by the Ministry of Science, Technological Development and Innovation, Republic of Serbia.

**Organized by:**

Faculty of Engineering University of Kragujevac  
Serbian Society of Mechanics (SSM)

**Co-organized by:**

Austrian Society of Experimental Strain Analysis (ASESA)  
Croatian Society of Mechanics (HDM)  
Czech Society for Mechanics (CSM)  
German Society of Experimental Structural Analysis (GESA)  
Greek Society of Experimental Mechanics of Materials (GSEMM)  
Hungarian Scientific Society of Mechanical Engineering (GTE)  
Italian Association for Stress Analysis (AIAS)  
Polish Committee for Mechanics of the Polish Academy of Sciences (KMPAN)  
Romanian Association of Stress Analysis and Materials Testing (ARTENS)  
Slovak Society of Mechanics (SSM)  
Slovenian Society of Experimental Mechanics (SSEM)

**Scientific Committee:**

|                          |   |
|--------------------------|---|
| Adrian Pascu             | Lucian Blaga University of Sibiu (Romania)            |
| Anatoly Nikonov          | University of Ljubljana (Slovenia)                    |
| Attila Kossa             | BME (Hungary)   |
| Bernhard Pichler         | Technische Universität Wien (Austria)                 |
| Damir Semenski           | University Zagreb (Croatia)                           |
| Dan Mihai Constantinescu | University Politehnica of Bucharest (Romania)         |
| Ermioni D. Pasiou        | Hellenic Ministry of Culture (Greece)                 |
| Eva Tillová              | University of Zilina (Slovakia)                       |
| Florian Grün             | University of Leoben (Austria)                        |
| Francesca Cosmi          | University of Trieste (Italy)                         |
| František Nový           | University of Zilina (Slovakia)                       |
| Igor Emri                | University of Ljubljana (Slovenia)                    |
| Josef Eberhardsteiner    | Technische Universität Wien (Austria)                 |
| Karel Doubrava           | Czech Technical University of Prague (Czech Republic) |
| Lovre Krstulović-Opara   | University of Split (Croatia)                         |
| Matthias Bartholmai      | BAM (Germany)   |
| Mario Guagliano          | Politecnico di Milano (Italy)                         |
| Miroslav Živković        | University of Kragujevac (Serbia)                     |
| Nenad Kolarević          | University of Belgrade (Serbia)                       |
| Paweł Pyrzanowski        | Warsaw University of Technology (Poland)              |
| Radim Halama             | Technical University of Ostrava (Czech Republic)      |
| Rita Kiss                | BME (Hungary)   |
| Stavros K. Kourkoulis    | National Technical University of Athens (Greece)      |

|                         |   |
|-------------------------|---|
| Stefan Dan Pastrama     | University Politehnica of Bucharest (Romania)     |
| Thomas Lehmann          | Chemnitz University of Technology (Germany)       |
| Vladimir P. Milovanović | University of Kragujevac (Serbia)                 |
| Zbigniew L. Kowalewski  | Polish Academy of Sciences, IPPT, Warsaw (Poland) |
| Zvonimir Tomičević      | University of Zagreb (Croatia)                    |

### **Honorary Members**

|                      |   |
|----------------------|---|
| Wilfried Eichelseder | University of Leoben (Austria)                            |
| Ivo Alfirevic        | University of Zagreb (Croatia)                            |
| Stjepan Jecic        | University of Zagreb (Croatia)                            |
| Stanislav Holy       | Czech Technical University of Prague (Czech Republic)     |
| Frantisek Planicka   | University of West Bohemia (Czech Republic)               |
| Milan Ruzicka        | Czech Technical University of Prague (Czech Republic)     |
| Lajos Borbas         | Budapest University of Technology and Economics (Hungary) |
| Alessandro Freddi    | University of Bologna (Italy)                             |
| Gianni Nicoletto     | University of Parma (Italy)                               |
| Romuald Bedzinski    | University of Zielona Góra (Poland)                       |
| Mieczysław Szata     | Wroclaw University of Technology (Poland)                 |
| Nicolae Iliescu      | University “Politehnica” of Bucharest (Romania)           |
| Marko Milos          | University of Belgrade (Serbia)                           |
| Milosav Ognjanovic   | University of Belgrade (Serbia)                           |
| Otakar Bokuvka       | University of Zilina (Slovakia)                           |
| Peter Palcek         | University of Zilina (Slovakia)                           |

### **Honorary Associate**

|                    |   |
|--------------------|---|
| Karl-Hans Laermann | Bergische Universität Wuppertal (Germany) |
|--------------------|---|

**Reviewers:**

|                      |  |
|----------------------|--|
| Marko Topalović      | University of Kragujevac (Serbia)          |
| Vladimir Milovanović | University of Kragujevac (Serbia)          |
| Miroslav Živković    | University of Kragujevac (Serbia)          |
| Snežana Vulović      | University of Kragujevac (Serbia)          |
| Vladimir Dunić       | University of Kragujevac (Serbia)          |
| Miloš Matejić        | University of Kragujevac (Serbia)          |
| Dragan Rakić         | University of Kragujevac (Serbia)          |
| Dušan Arsić          | University of Kragujevac (Serbia)          |
| Nebojša Hristov      | University of Defence in Belgrade (Serbia) |
| Damir Jerković       | University of Defence in Belgrade (Serbia) |
| Nenad Kolarević      | University of Belgrade (Serbia)            |
| Miroslav Milutinović | University of East Sarajevo (B & H)        |
| Vladimir Simić       | University of Kragujevac (Serbia)          |
| Petra Bagavac        | University of Split (Croatia)              |
| Zvonimir Tomičević   | University of Zagreb (Croatia)             |

**Organising Committee:****Chair**

|                   |                                   |
|-------------------|-----------------------------------|
| Miroslav Živković | University of Kragujevac (Serbia) |
|-------------------|-----------------------------------|

**Vice-Chair**

|                      |                                   |
|----------------------|-----------------------------------|
| Vladimir Milovanović | University of Kragujevac (Serbia) |
|----------------------|-----------------------------------|

**Secretary**

|                |                                   |
|----------------|-----------------------------------|
| Vladimir Dunić | University of Kragujevac (Serbia) |
|----------------|-----------------------------------|

**Members**

|                      |                                   |
|----------------------|-----------------------------------|
| Aleksandar Bodić     | University of Kragujevac (Serbia) |
| Miloš Pešić          | University of Kragujevac (Serbia) |
| Anđela Perović       | University of Kragujevac (Serbia) |
| Mirjana Piskulić     | University of Kragujevac (Serbia) |
| Strahinja Milenković | University of Kragujevac (Serbia) |



Supported by

---



Republic of Serbia  
**MINISTRY OF SCIENCE,  
TECHNOLOGICAL DEVELOPMENT  
AND INNOVATION**

Sponsors

---



**KONTROL  
INSPEKT**



## TABLE OF CONTENTS:

### **KEYNOTE PRESENTATIONS:**

THE INFLUENCE OF BUILD PARAMETERS ON THE COLLAPSE BEHAVIOUR OF A HIGHLY POROUS RANDOM OPEN-CELL LATTICE 3D PRINTED IN IN718 ALLOY *Tomasz Libura, Judyta Sienkiewicz, Zbigniew Nowak, Zbigniew Kowalewski, Alexis Rusinek, George Voyiadjis, Urvashi Gunpath, Paul Wood* .....3

INFLUENCE OF STRINGER GEOMETRY ON THE STRUCTURAL INTEGRITY OF CRACKED STIFFENED PLATES *Stefan-Dan Pastrama* .....5

IMPLEMENTATION AND PRACTICAL APPLICATION OF NON-EQUIVALENT BIAXIAL MEASUREMENTS FOR HYPERELASTIC MATERIALS *Kristóf Havasi, Attila Kossa* .....7

GRP TANK LOADING INVESTIGATION USING CFS AND DFOS SENSORS *Karel Doubrava, Nikola Schmidová, David Blaha, Zdeněk Padovec, Ctirad Novotny, Radek Kottner, Radek Sedláček, Milan Růžicka* .....9

IDENTIFICATION OF ENERGETIC AND DISSIPATIVE FLOW STRESS USING INFRARED THERMOGRAPHY *Nikola Lalović, Thomas Böhlke* .....11

NOVEL TEST METHODS FOR TRIBO/MECHANICAL PROPERTIES IN THE CONTEXT OF ALTERNATIVE FUELS *Florian Grün, Peter Oberreiter, Philipp Renhart, Michael Pusterhofer* .....13

THE DEPENDENCE OF THE DEGREE OF NON-ADDITIVITY OF MECHANICALLY LOADED SYSTEMS ON THE LOADING RATE *Dimos Triantis, Ilias Stavrakas, Ermioni Pasiou, Stavros Kourkoulis* .....15

IMPACT VELOCITY INFLUENCE ON THE FRACTURE BEHAVIOUR OF PORCINE FEMURS UNDER DYNAMIC LOADING *Petra Bagavac, Marijo Bekić, Lovre Krstulović-Opara* .....17

EXPERIMENTAL ANALYSIS OF HIGH-SPEED GEARBOXES *Nenad Kolarević, Milosav Ognjanović, Miloš Stanković, Aleksandar Dimić, Nikola Davidović, Marko Miloš* .....19

### **POSTER AND ORAL PRESENTATIONS:**

EXPERIMENTAL STUDY OF HEAT EFFECT ON THE DEFORMATIONS OF AL/CU BIMETAL IN 3-POINT BENDING *Robert Uścinowicz* .....25

DYNAMIC CALIBRATION OF A MODEL OF A MIXED STRUCTURE BRIDGE DECK BASED ON DYNAMIC TESTS OF THE BRIDGE *Cristian Lucian Ghindea, Radu Iuliu Cruciat, Andrei Gheorghe Pricopie, Adrian Aurelian Diaconu, Ionut Radu Racanel* .....27



|   |    |
|---|----|
| CONSTITUTIVE MODELLING OF POLYMER FOAMS USING AN ASYMMETRIC POISSON'S RATIO <i>Márton Kammerer, Attila Kossa</i> .....  | 29 |
| MECHANICAL RESPONSE OF PA6 UNDER ENVIRONMENTAL CONDITIONS: A DUAL APPROACH USING EXPERIMENTS AND NUMERICAL ANALYSES <i>Nicolae Stefanoaea, Olivia-Laura Petrascu, Adrian Marius Pascu</i> .....                       | 31 |
| COMPARATIVE EVALUATION OF THE ELASTIC MODULUS IN CEMENT PASTES USING ULTRASONIC AND 3-MIN-CREEP TESTING <i>Sophie Schmid, Olaf Lahayne, Bernhard Pichler</i> .....  | 33 |
| EXPERIMENTAL ANALYSIS OF ELECTRIC SOOTER DYNAMICS <i>Zsombor Magyari, Roland Zana, Dénes Takács</i> .....   | 35 |
| EFFECTS OF STEERING ANGLE SATURATION ON STABILITY OF REVERSING TRAILERS <i>Levente Mihalyi, Denes Takacs</i> .....  | 37 |
| MULTITECHNIQUE CHARACTERIZATION OF CEMENT PASTE WITH AND WITHOUT GRAPHENE OXIDE <i>Muhammad Shahid, Sophie Schmid, Olaf Lahayne, Agathe Robisson, Bernhard Pichler</i> .....  | 39 |
| ANALYSIS OF TEST STRAIN IN A FOUR-POINT BENDING CALIBRATION SETUP FOR STRAIN GAGES <i>Thomas Lehmann, Tobias Jähnichen, Jörn Ihlemann</i> .....   | 41 |
| STABILITY LOSS OF TAPE-SPRINGS UNDER COMPRESSIVE LOADS: A FINITE ELEMENT ANALYSIS <i>Péter Máté, András Szekrényes</i> .....  | 43 |
| EXPERIMENTAL AND NUMERICAL ANALYSIS OF LASER-CUT PNEUMATIC SOFT ROBOT STRUCTURES <i>Kata Ruzsa, Szabolcs Berezvai</i> .....   | 45 |
| OPTIMISING GAIT STABILITY ANALYSIS IN PATIENTS WITH MUSCULOSKELETAL DISORDERS <i>Kristóf Bányi, Zsófia Pálya, Mária Takács, Rita Kiss</i> .....   | 47 |
| ALTERNATIVE METHOD OF STRESS PARAMETERS DETERMINATION DURING TENSILE TESTS USING METRIC ENTROPY AND DIC <i>Zbigniew Kowalewski, Mateusz Kopec, Grzegorz Garbacz, Adam Brodecki</i> .....                              | 49 |
| INFLUENCE OF TEMPERATURE ON MODE I FRACTURE TOUGHNESS OF A DUCTILE ADHESIVE <i>Lukáš Horák, Jan Krystek</i> .....   | 51 |
| INVESTIGATION OF RESIDUAL STRESS EVOLUTION DUE TO CYCLIC LOADING BY YIELD SURFACE TRACKING <i>Radim Halama, Michal Kořínek, Jiří Čapek, Karel Trojan, Radim Petkov, Adam Gladiš, Jiří Hajnýš, Nikolaj Ganev</i> ..... | 53 |
| DEVELOPMENT OF CONSTRUCTION FOR THE TRANSFER OF HEAVY PRISMATIC PROFILES <i>Miroslav Milutinović, Aleksandar Okilj, Sanjin Troha</i> ....   | 55 |

|  |    |
|--|----|
| EXPERIMENTAL DETERMINATION OF THE EFFICIENCY OF A COMPOUND PLANETARY GEARBOX <i>Sanjin Troha, Kristina Marković, Željko Vrcan, Filip Šulj, Miroslav Milutinović</i> .....  | 57 |
| EFFECT OF PRIOR CREEP ON TENSILE PROPERTIES OF AA2124/SiC COMPOSITES <i>Agnieszka Rutecka, Zbigniew Kowalewski</i> .....   | 59 |
| DETERMINATION OF FOUR CHARACTERISTIC REGIONS IN THE STRESS–STRAIN RESPONSE OF APM FOAM UNDER COMPRESSION USING DVC <i>Zvonimir Tomičević, Borna Božović, Daniel Kytýř, Petr Koudelka</i> .....                         | 61 |
| DEVELOPMENT OF A TEST DEVICE (FIXTURE) FOR DETERMINING THE PULL-OUT FORCE OF SWAGED BALL TERMINATIONS ON CONTROL CABLES <i>Milan Blagojević, Živče Šarkočević, Milan Bojović, Ivica Čamagić</i> .....                  | 63 |
| QUANTITATIVE DETERMINATION OF GLASS FIBER CONTENT IN FIBER REINFORCED COMPOSITE MATERIALS <i>Milan Blagojević, Živče Šarkočević, Ivica Čamagić</i> .....   | 65 |
| NUMERICAL ANALYSIS OF BARREL LOADS IN THE DESIGN PHASE OF AN ARTILLERY SYSTEM <i>Bogdan Todorović, Aleksandra Obradović, Nebojša Hristov, Damir Jerković</i> .....   | 67 |
| AUTOMATION OF CONSTITUTIVE MODEL PARAMETER IDENTIFICATION <i>Dragan Rakić, Slobodan Radovanović, Miroslav Živković</i> .....   | 71 |
| FATIGUE PERFORMANCE COMPARISON OF STRENGTH 700 AND 55NiCrMoV7 STEELS <i>Dušan Arsić, Gordana Jovičić, Miroslav Živković, Miloš Pešić, Marko Topalović, Đorđe Ivković, Marko Delić</i> .....                            | 75 |
| EXPERIMENTAL DETERMINATION OF THE EFFECT OF AXIAL FORCE ON A HEADLESS SCREW CONNECTION <i>Anđela Perović, Miloš Matejić, Vladimir Milovanović</i> .....  | 79 |
| INITIAL EXPENDABLE TURBOJET PROTOTYPE TESTING EXPERIENCES <i>Nikola Davidović, Nenad Kolarević, Milos Stanković, Marko Miloš</i> .....   | 83 |
| HARDNESS MEASUREMENT OF ROLLING BEARING BALLS SUBJECTED TO MULTI-CYCLE CRYOGENIC TREATMENT <i>Jovana Antić, Žarko Mišković, Danilo Pejčić, Martin Dix, Alexander Pierer, Jürgen Heidrich, Matthias Milbrandt</i> ..... | 87 |
| EXPERIMENTAL AND ANALYTICAL METHODS FOR DETERMINING INTERLAMINAR SHEAR STRENGTH OF COMPOSITES MADE BY FDM 3D PRINTING <i>Nenad Grujović, Strahinja Milenković, Fatima Živić</i> .....                                  | 91 |
| MEASUREMENT OF PIEZOELECTRIC PROPERTIES OF HYDROGELS <i>Fatima Živić, Marija Branković, Danilo Petrović, Petar Todorović, Nenad Grujović</i> .....   | 95 |

|   |     |
|---|-----|
| INFLUENCE OF PALLET PLACEMENT METHOD ON BEAM BEHAVIOR IN RACK STRUCTURE <i>Mirjana Piskulić, Rodoljub Vujanac, Nenad Miloradovic, Mirko Blagojevic</i> .....  | 99  |
| ANALYTICAL AND FEM ASSESSMENT OF A DOUBLE-SIDED BUTT WELDED S1000QL SPECIMEN FOR TENSILE TESTING PREPARATION <i>Snežana Joksić, Jovana Živić, Marija Matejić, Miloš Matejić, Živče Šarkočević, Ivica Čamagić</i> .....  | 103 |
| QUASI-STATIC TENSILE TESTING OF HIGH-STRENGTH BALLISTIC STEEL USING DIGITAL IMAGE CORRELATION – PRELIMINARY STUDY <i>Miloš Pešić, Aleksandar Bodić, Marko Topalović, Snežana Vulović, Vladimir Dunić, Vladimir Milovanović, Miroslav Živković</i> .....                         | 107 |
| QUASI-STATIC AND DYNAMIC BEHAVIOR OF VANADIUM-CARBIDE REINFORCED ALUMINUM ALLOY STUDIED VIA DIGITAL IMAGE CORRELATION – PRELIMINARY STUDY <i>Miloš Pešić, Aleksandar Bodić, Marko Topalović, Snežana Vulović, Vladimir Dunić, Vladimir Milovanović, Miroslav Živković</i> ..... | 111 |
| EXPERIMENTAL VALIDATION OF FRICTION STIR WELDING PARAMETERS FOR EN AW 6060 T6 ALUMINUM ALLOY <i>Aleksandar Bodić, Vladimir Milovanović, Miroslav Živković, Miloš Pešić, Dušan Milojević, Marko Topalović</i> .....  | 115 |
| RESIDUAL STRESS-INDUCED DAMAGE IN BRAKE DRUMS <i>Dobrivoje Čatić, Vladimir Čatić</i> .....  | 119 |
| INFLUENCE OF CRACKS ON THE STRUCTURAL STABILITY OF CYLINDRICAL STEEL EQUALIZATION TANKS <i>Vladimir Milovanović, Stefan Dikić, Saša Spasenić, Mileta Ristivojević, Sreten Spasenić, Aleksandar Bodić, Miloš Pešić</i> .....   | 123 |
| STRUCTURAL ASSESSMENT AND REDISIGN OF THE WATER CHAMBER IN A DOMESTIC GASIFICATION BOILER <i>Filip Nastić, Mladen Josijević, Davor Končalović, Dušan Gordić, Vladimir Vukašinović</i> .....   | 127 |
| INFLUENCE OF FEED RATE ON SURFACE ROUGHNESS OF AL6088 ALLOY IN THE BALL BURNISHING PROCESS <i>Vladimir Kočović, Dragan Džunić, Sonja Kostić, Živana Jovanović Pešić, Milan Đorđević, Ljiljana Brzaković, Đorđe Vukelić</i> .....  | 131 |

|   |     |
|---|-----|
| EFFECT OF ELECTRON BEAM PROCESSING PARAMETERS ON THE SURFACE ROUGHNESS OF TITANIUM SAMPLES: PART II <i>Živana Jovanović Pešić, Aleksandra Vulović, Strahinja Milenković, Đorđe Ilić, Dragan Džunić</i> .....    | 135 |
| 2D AXISYMMETRIC VS. 3D SOLID ELEMENT PHASE-FIELD DAMAGE MODELING <i>Vladimir Dunić, Aleksandar Bodić, Miroslav Živković</i> .....   | 139 |
| ANALYSIS OF DEEP DRAWING PROCESS USING FEA AND FLD <i>Marko Delić, Vesna Mandić, Srbislav Aleksandrović, Dušan Arsić, Đorđe Ivković</i> .....   | 143 |
| DEVELOPMENT AND EXPERIMENTAL TESTING OF A HYDRAULIC STAND WITH PUMPS INTENDED FOR A CENTRAL HEATING SYSTEM <i>Mladen Josijević, Dušan Gordić, Davor Končalović, Filip Nastić</i> .....                          | 147 |
| FINITE ELEMENT ANALYSIS OF PLATELET ACTIVATION AND CELL MECHANICS IN CIRCULATING TUMOR CELL ARREST <i>Vladimir Simić, Aleksandar Nikolić, Miljan Milošević, Shao Ning, Fransisca Leonard, Miloš Kojić</i> ..... | 151 |
| CONDITIONS RELATED TO THE ROOF STRUCTURE STRENGTH OF BUSES POWERED BY NATURAL GAS AND FUEL CELLS <i>Saša Milojević, Snežana Vulović, Marija Rafailović, Slobodan Savić</i> .....                                | 155 |
| CFD INVESTIGATION OF TURBULENT WATER FLOW IN A PIPE ELBOW: ASSESSMENT OF CAVITATION RISK <i>Payle Ljubojević, Saša Stašević</i> .....   | 159 |
| KINEMATIC ANALYSIS OF THE COMPLEX PLANETARY GEAR TRAIN OVERVIEW <i>Stefan Čukic, Slavica Miladinović, Anđela Perović, Lozica Ivanović, Saša Milojević, Blaža Stojanović</i> .....                               | 163 |
| IMPROVEMENT OF THE TECHNICAL AND OPERATIONAL CHARACTERISTICS OF ZA-27 ALLOYS REINFORCED WITH SIC AND $Al_2O_3$ <i>Dragan Džunić, Stefan Miletić, Milan Ivković, Slobodan Mitrović</i> .....                     | 167 |
| CHALLENGES OF ADDITIVE MANUFACTURING IN MACHINE ELEMENT APPLICATIONS <i>Ivan Simonović, Aleksandar Marinković, Jovana Antić, Nenad Kolarević</i> .....  | 171 |
| AUTHOR INDEX .....  | 175 |

## 2D AXISYMMETRIC VS. 3D SOLID ELEMENT PHASE-FIELD DAMAGE MODELING

Vladimir DUNIĆ<sup>1</sup>, Aleksandar BODIĆ<sup>2</sup>, Miroslav Živković<sup>3</sup>

<sup>1</sup> [0000-0003-1648-1745](https://orcid.org/0000-0003-1648-1745), University of Kragujevac Faculty of Engineering, Sestre Janjić 6, Kragujevac, Serbia, E-mail: [dunic@kg.ac.rs](mailto:dunic@kg.ac.rs);

<sup>2</sup> [0000-0002-1713-6540](https://orcid.org/0000-0002-1713-6540), University of Kragujevac Faculty of Engineering, Sestre Janjić 6, Kragujevac, Serbia, E-mail: [abodic@uni.kg.ac.rs](mailto:abodic@uni.kg.ac.rs);

<sup>3</sup> [0000-0002-0752-6289](https://orcid.org/0000-0002-0752-6289), University of Kragujevac Faculty of Engineering, Sestre Janjić 6, Kragujevac, Serbia, E-mail: [miroslav.zivkovic@kg.ac.rs](mailto:miroslav.zivkovic@kg.ac.rs);

### 1. Introduction

Phase-field damage modeling (PFDM) is very popular among researchers and engineers, because it offers applications to various fields of interest. Investigating damage in structures and predicting its evolution, which can lead to material stiffness degradation and structural failure, is the most interesting aspect. Various research groups at the top world universities have implemented the latest findings into the commercial and research finite element method (FEM) codes, and the PFDM will probably be recognized technique for structural safety monitoring.

However, the practical application is in one of the top interests, but some disadvantages decrease the possibility of efficient and accurate FEM simulations. One of them is the need for a fine FE mesh in the zone where material damage is expected, which makes models with large numbers of degrees of freedom and huge computational time. In this scope, it is important to implement the PFDM for various types of finite elements such as 2D axisymmetric elements, which can decrease the size of the problem by modeling only a cross-section of the axisymmetric structure.

In this paper, we have implemented a previously developed PFDM theory into the 2D axisymmetric element and compared the simulation results to the 3D solid element for the well-known large strain circular bar example.

### 2. Phase-field damage model for 2D axisymmetric element

Recently developed, the critical-total strain based PFDM implementation, presented in [1], was introduced as a user-friendly approach which can be easily applied for simulation of damage evolution in ductile materials. The details are given in several

papers published at conferences [2,3] and journals [1,4,5,6], but here, the main equation will be repeated. The internal potential energy consists of elastic, plastic and fracture parts as:

$$W_{int} = W_e + W_p + W_f. \quad (1)$$

The elastic strain energy is:

$$W_e = (1 - d)^2 \frac{1}{2} \sigma_0 : \epsilon_e, \quad (2)$$

where  $\sigma_0$  is the Cauchy stress tensor,  $\epsilon_e$  is the elastic strain tensor, and  $d$  is damage variable. The plastic part of the internal strain energy is:

$$W_p = (1 - d)^2 (\sigma_{yv} \bar{\epsilon}_p + (\sigma_{y0,\infty} - \sigma_{yv}) \left( \bar{\epsilon}_p + \frac{1}{n} e^{-n \bar{\epsilon}_p} \right) + \frac{1}{2} H \bar{\epsilon}_p^2), \quad (3)$$

where  $\sigma_{yv}$  is the yield stress,  $\bar{\epsilon}_p$  is the equivalent plastic strain,  $\sigma_{y0,\infty}$  is the saturation hardening stress,  $n$  is the hardening exponent and  $H$  is the hardening modulus. The fracture strain energy density is:

$$W_f = G_v [d + \frac{l_c^2}{2} |\nabla d|^2], \quad (4)$$

where  $G_v$  is the specific fracture energy per unit volume and  $l_c$  is the characteristic length. By derivation of the equilibrium of external and internal potential energy, the final form of the equilibrium equation can be found as:

$$\text{Div} \sigma + \mathbf{b} = 0. \quad (5)$$

The plasticity yielding condition law is:

$$\bar{\sigma}_{eq} - \sigma_{yv} - (\sigma_{y0,\infty} - \sigma_{yv}) (1 - e^{-n \bar{\epsilon}_p}) - H \bar{\epsilon}_p = 0. \quad (6)$$

Finally, the phase-field damage evolution law can be derived as:

$$G_v [d - l_c^2 \nabla^2 d] + g'(d) \max(\psi_e + \psi_p - G_v/2) = 0, \quad (7)$$



where  $\psi_e$  and  $\psi_p$  are the effective elastic and plastic strain energy.

The critical fracture energy  $G_v$  can be calculated by finding the effective critical strain energy as  $G_v/2$ , what gives:

$$G_v = \frac{\sigma_{yv}^2}{E} + 2\sigma_{yv} \left( \varepsilon_{cr} - \frac{\sigma_{yv}}{E} \right) + 2 \left( \sigma_{y0,\infty} - \sigma_{yv} \right) \left[ \left( \varepsilon_{cr} - \frac{\sigma_{yv}}{E} \right) + \frac{1}{n} \left( e^{-n\varepsilon_{cr}} - e^{-n\frac{\sigma_{yv}}{E}} \right) \right] + H \left( \varepsilon_{cr}^2 - \frac{\sigma_{yv}^2}{E^2} \right). \quad (8)$$

where  $\varepsilon_{cr}$  is the critical total equivalent strain, and  $E$  is the elasticity modulus.

### 3. Finite element models and material parameters

The presented critical-total strain based PFDM is implemented into the software PAK-DAM v25 [7] for the 3D solid and 2D axisymmetric element. Both implementations can be tested for the well-known circular bar necking example [8]. For that purpose, a large strain von Mises plasticity constitutive model is used and logarithmic strain measure [9].

Dimensions of the half of the bar which is modeled by 2D axisymmetric and 3D solid elements are given as follows: bottom radius is 6.35mm, while the upper side is 1% larger – 6.4135mm, length is 26.67mm. The imperfection is prescribed to trigger the necking at the position where the radius is smaller. The 2D axisymmetric model has 96 elements with mid-side nodes which gives 345 nodes in total.

In Figure 1, the boundary and loading conditions for a 2D axisymmetric finite element model are given. A cross-section of the  $\frac{1}{4}$  of the specimen is modeled, so the y-symmetry boundary conditions are prescribed at the bottom side, while the opposite side is loaded by prescribed displacements which are connected by equations in the y-direction to the node on the central axis. In Figure 2, the same data are given for the 3D solid finite element model. One quarter of the half of the bar is modeled while symmetry boundary conditions are prescribed at appropriate surfaces. On the bottom side, also, the y-symmetry boundary conditions are necessary as well as loading conditions defined by prescribed displacements. The 3D model has 648 finite elements with mid-side nodes, which gives in total of 3388 nodes. As it can be noticed, the 3D model is approximately 10 times larger, and refinement of the mesh for a more detailed simulation is practically impossible.

The simulation is performed by the Full Newton iterative method with line search. The solution is obtained in 40 steps with a displacement increment of 0.2 mm, up to the total displacement of 8 mm.

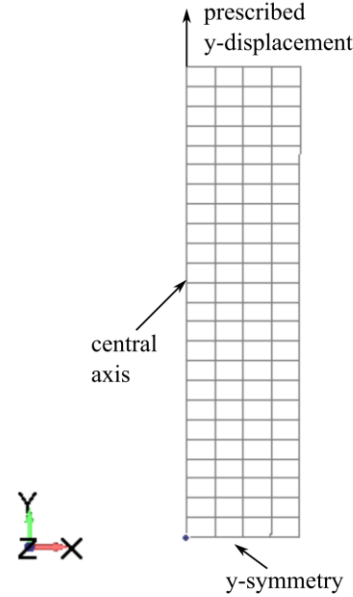


Fig. 1. 2D axisymmetric finite element model with boundary and loading conditions.

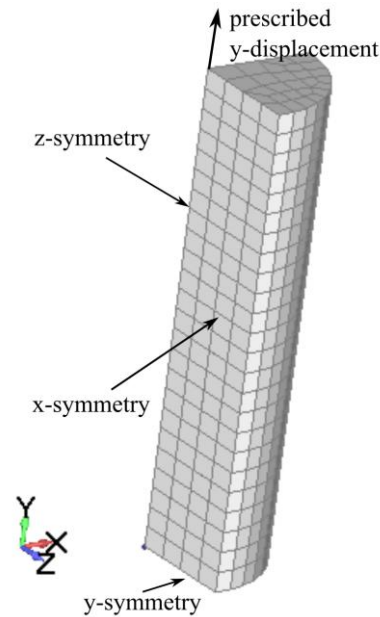


Fig. 2. 3D solid finite element model with boundary and loading conditions.

### 4. Simulation results

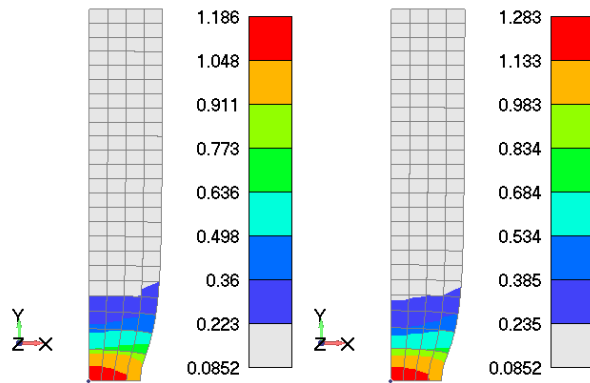
The simulation is performed to show the functionality of the critical-total strain based PFDM implementation into the both 2D axisymmetric and 3D solid finite elements in PAK-DAM v25 software [7].



**Table 1.** Material parameters

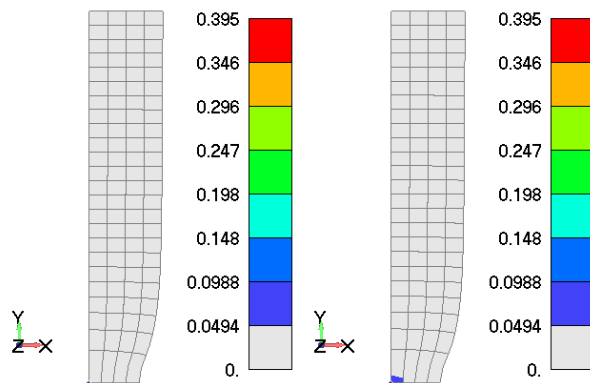
| Parameter         | Value       | Parameter             | Value       |
|-------------------|-------------|-----------------------|-------------|
| Young modulus     | 210.4 [GPa] | Exponential hardening | 16.93 [-]   |
| Poisson's ratio   | 0.3118 [-]  | Linear hardening      | 0.12924 [-] |
| Yield stress      | 0.45 [GPa]  | Critical eq. strain   | 1.2 [-]     |
| Saturation stress | 0.715 [GPa] | Characteristic length | 0.5 [mm]    |

In Figure 3, the equivalent plastic strain field is given in 31. and 32. time step, as the critical strain is achieved at that moment.



**Fig. 3.** Equivalent plastic strain field in 31 (left) and 32 (right) time steps for a 2D axisymmetric FE model.

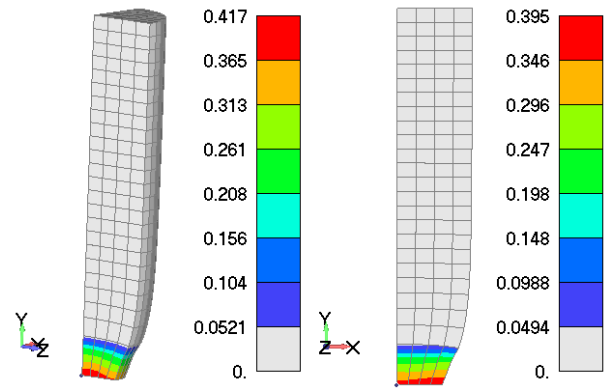
In Figure 4, the damage field is given for the steps 32 and 33, as an important detail which verifies the control over the damage onset by critical equivalent strain.



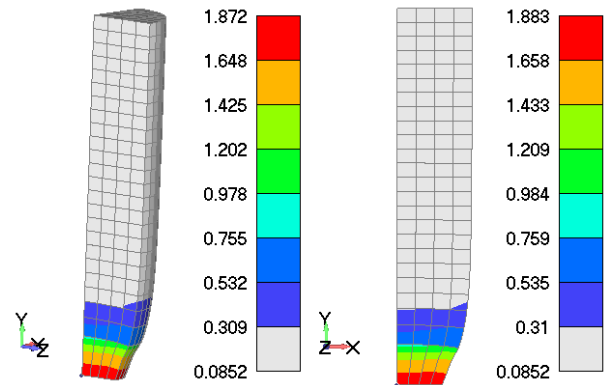
**Fig. 4.** Damage field in 32 (left) and 33 (right) time steps for a 2D axisymmetric FE model.

In Figure 5, the damage field is given for the last time step for both the 3D solid and 2D axisymmetric models to compare the obtained results.

In Figure 6, the equivalent plastic strain field is given for the last time step for both the 3D solid and 2D axisymmetric models to compare the obtained results.

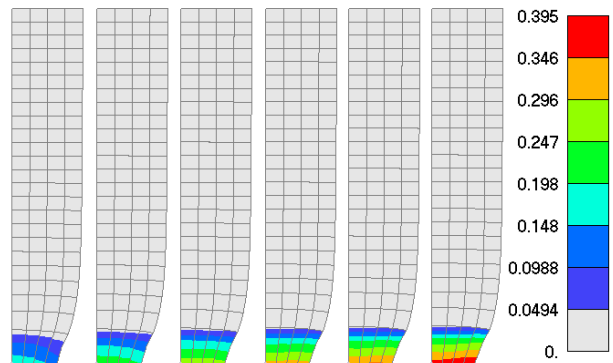


**Fig. 5.** Damage field in the last (40) time step for 3D solid (left) and 2D axisymmetric (right) FE model.



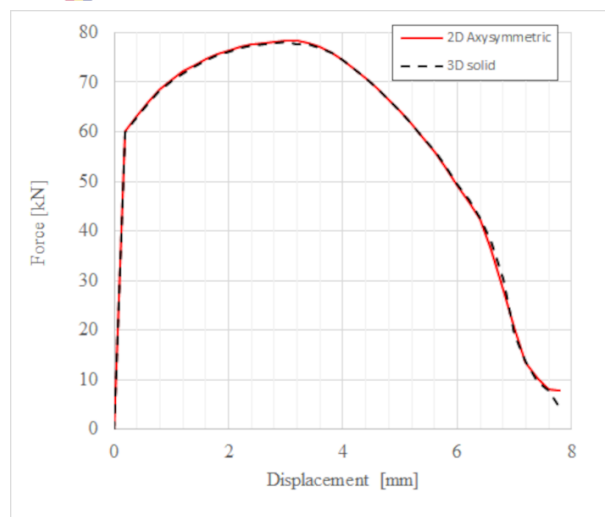
**Fig. 6.** Equivalent plastic strain field in the last (40) time step for 3D solid (left) and 2D axisymmetric (right) FE model.

In Figure 7, the damage field evolution at the end of the simulation is given for the last six time steps for the 2D axisymmetric model.



**Fig. 7.** Damage evolution in 2D axisymmetric FE model in the last six time steps (35-40 from left to right) of the simulation.

In Figure 8, the constraint force vs. displacement diagram at the upper side of the model is given for both the 3D solid and 2D axisymmetric models to compare the responses.



**Fig. 8.** Force-displacement response for 2D axisymmetric and 3D solid FE model

## 5. Discussion and conclusions

The simulation results presented in previous sections offer many points of interest for discussion. Firstly, the material parameters given in Table 1, define the stress-strain response of the material, but one important parameter for the PFDM simulation is the critical equivalent strain which is set to 1.2. As, the equivalent plastic strain defines the yield stress function in eq. (6), when the critical value is reached in time step 32 (Figure 3.), in the next time step 33, the damage occurs (Figure 4.). It is one time step later because the solution procedure is defined in a partitioned manner, so the damage field is late for one time step with respect to the displacement field. In Figure 5, it can be seen that the damage field achieves a similar level for both 2D axisymmetric and 3D solid FE models, but small difference (less than 5%) can be noticed. A similar situation is for the equivalent plastic strain field at the last time step, given in Figure 6, but the difference is less than 1%. Figure 7 shows the evolution of the damage field in the specimen across the cross-section in the necking zone. Although, relatively coarse mesh is used, the increase of damage zone can be observed. Finally, in Figure 8, the force-displacement response of the circular bar model is compared for the 3D solid and 2D axisymmetric FE models and the overlapping of the diagrams is obvious.

At the end, by analyzing the obtained results, it can be confirmed that both implementations of PFDM are functional and that the proposed method can be used for real structures. In this case, large strain nonlinear analysis with the Von Mises plasticity model and exponential hardening function is used, which is one of the most advanced

simulations in the field. Of course, the advantage of a 2D axisymmetric finite element is obvious for the computational time necessary to solve the problem, but for detailed analysis, the 3D solid element can be used successfully.

## Acknowledgments

This research is supported by the Science Fund of the Republic of Serbia, #GRANT No 7475, Prediction of damage evolution in engineering structures – PROMINENT and by the Ministry of Science, Technological Development and Innovation, Republic of Serbia, Agreement No. 451-03-137/2025-03/200107.

## References

- [1] Dunić, V., Gubeljak, N., Živković, M., Milovanović, V., Jagarinec, D., Djordjevic, N. Experimental Characterization and Phase-Field Damage Modeling of Ductile Fracture in AISI 316L, *Metals*, 2024, 14(7), 787.
- [2] Dunić, V., Živković, M., Milovanović, V. Phase-field Fatigue modeling in ductile materials, *The 9th European Congress on Computational Methods in Applied Sciences and Engineering - ECCOMAS 2024*, Lisbon, Portugal, 3-7 June 2024. (e-source)
- [3] Dunić, V., Živković, M.; Critical total-strain based Phase-Field Damage Model implementation for ductile fatigue, *5th International Conference on Computational Engineering ICCE 2024*, Darmstadt, Germany, 30 September-2 October 2024. (e-source)
- [4] Dunić, V., Živković, J., Milovanović, V., Pavlović, A., Radovanović, A., Živković, M. Two-Intervals Hardening Function in a Phase-Field Damage Model for the Simulation of Aluminum Alloy Ductile Behavior, *Metals*, 2021, 11(11), 1685.
- [5] Živković, J., Dunić, V., Milovanović, V., Pavlović, A., Živković, M. A Modified Phase-Field Damage Model for Metal Plasticity at Finite Strains: Numerical Development and Experimental Validation, *Metals*, 2021, 11(1), 47.
- [6] Miehe, C., Welschinger, F., Hofacker, M. Thermodynamically consistent phase-field models of fracture: Variational principles and multi-field FE implementations. *Int. J. Numer. Methods Eng.* 2010, 83, 1273–1311.
- [7] Živković, M., Dunić, V., Rakić, D., Grujović, N., Slavković, R., Kojić, M. PAK-DAM Software for Damage and Fracture Simulation; Faculty of Engineering, University of Kragujevac: Kragujevac, Serbia, 2025.
- [8] Simo, J.C., Miehe, C. Associative coupled thermoplasticity at finite strains: Formulation, numerical analysis and implementation. *Comput. Methods Appl. Mech. Eng.* 1992, 98, 41–104.
- [9] Kojić, M., Bathe, K.J. *Inelastic Analysis of Solids and Structures*, Springer: Berlin/Heidelberg, Germany, 2005.

